



**TRIA**  
SEPUTEH

**EBON**  
TOWER

[triaseputeh.com.my](http://triaseputeh.com.my)

# EBON

## Your Serene Lifestyle.

You support life. And you do not waver,  
Even in the strongest winds.  
With a foundation buried deep  
into the earth, you reach skyward.  
All the while minding the little seeds  
dropped in your large shadow.

Here. You thrive.





### Experience the concept of space

- Built-ups from 1,518 sf to 2,874 sf
- A choice of units with 3 - 4 bedrooms
- Balanced natural lighting and shaded glazing
- 3 acres of greenery
- Private clubhouse

### Your lifestyle, protected

- 3-tier security
- Security perimeter fencing
- Double boom gate guardhouse with key card access
- CCTV monitoring



### Roof Garden Plans

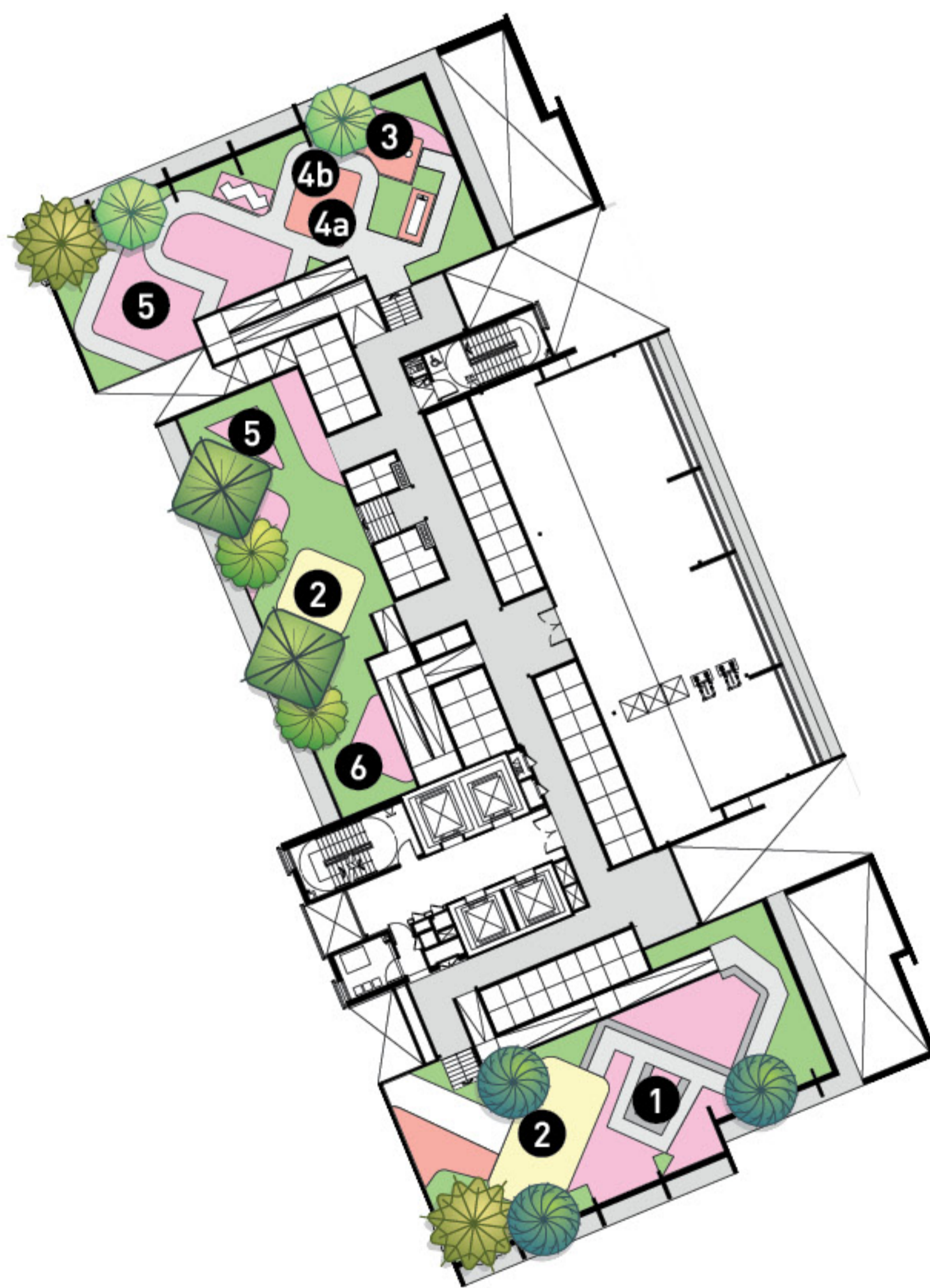


#### CAVI



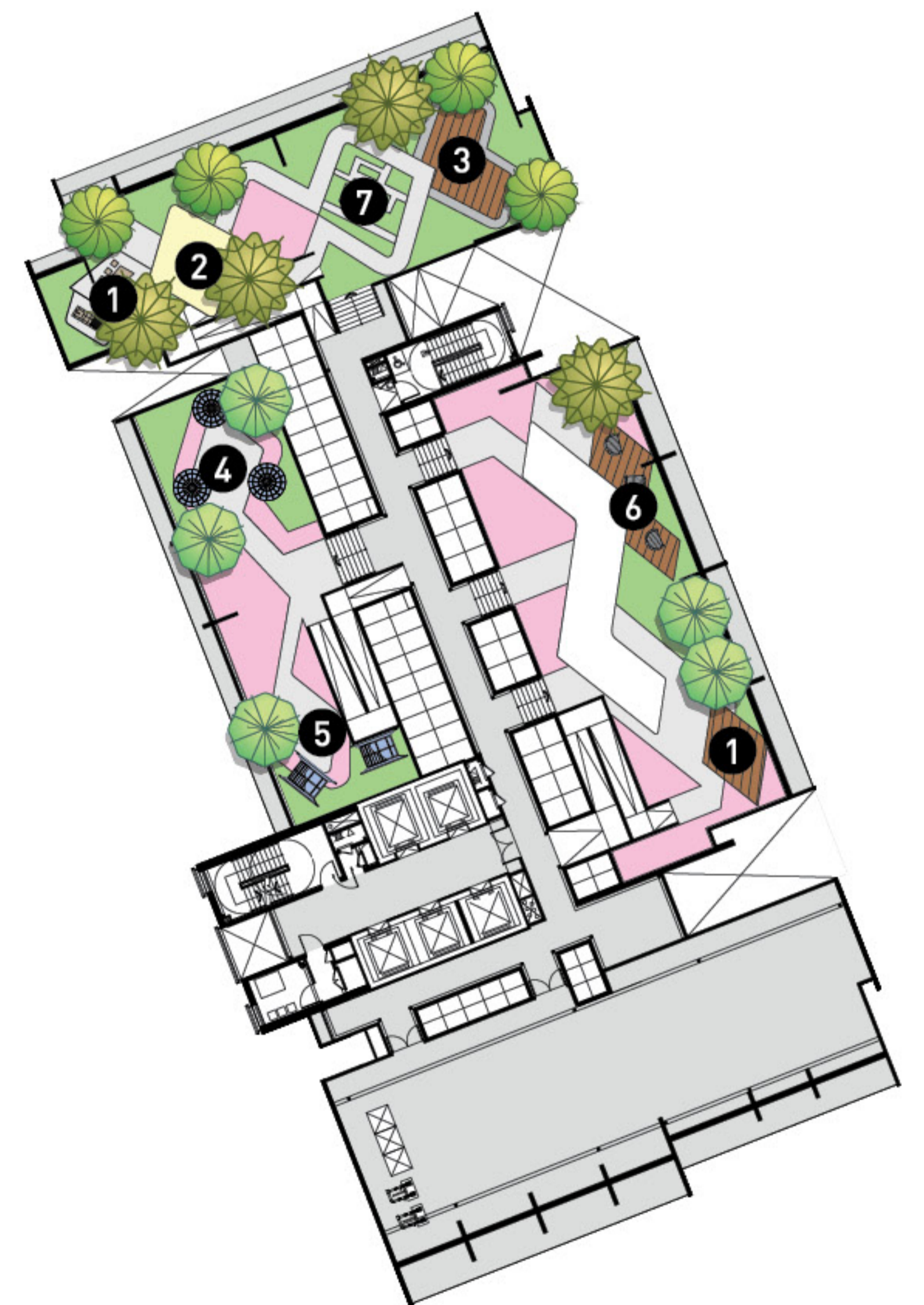
1. Jacuzzi
2. Fragrant Garden
3. Reflexology Path
4. Observation Deck
5. Spa Spot

#### EBOÑ



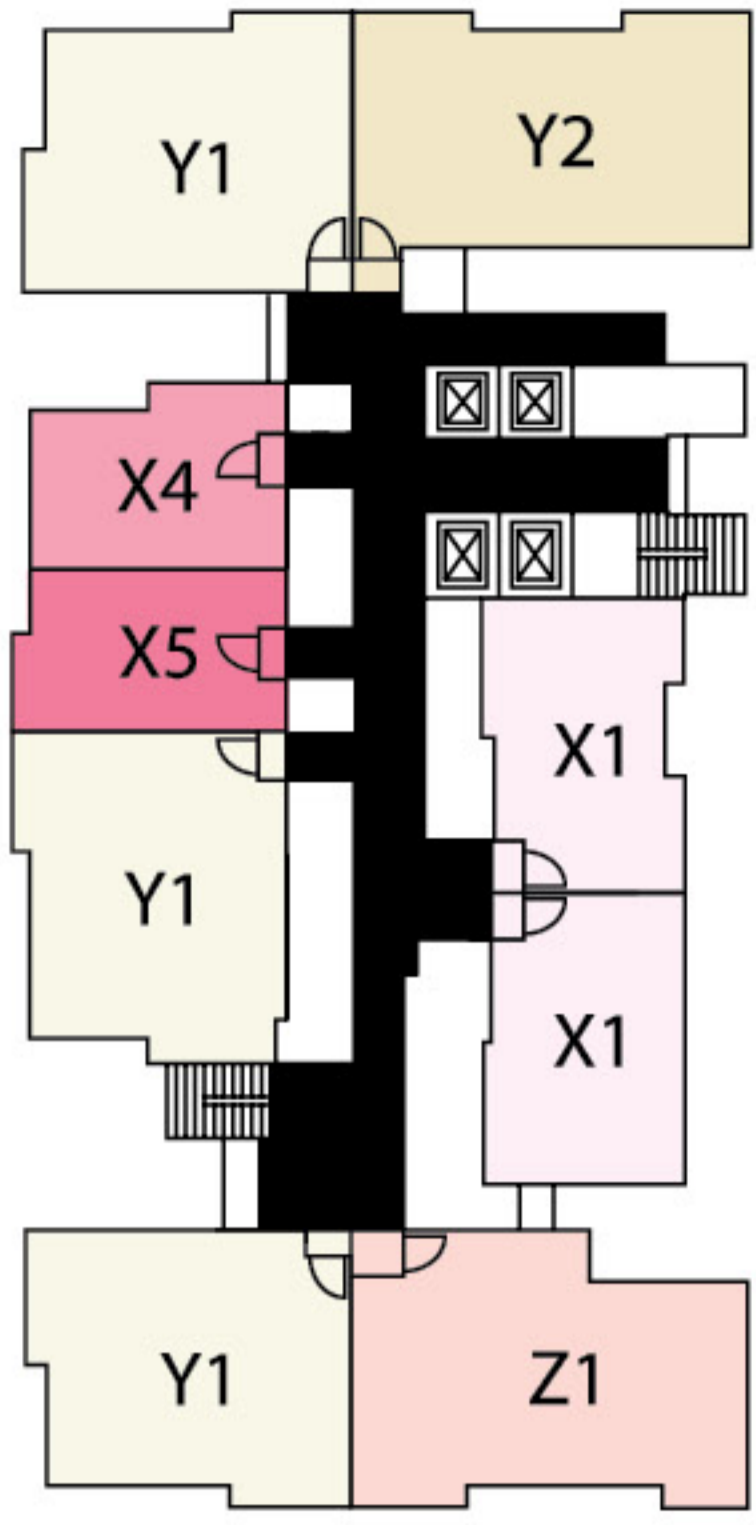
1. Herbs Garden
2. Light Pavilion
3. Parcourse Walk
- 4a. Yoga Lawn
- 4b. Meditation Lawn
5. Four Seasons Planting
6. Observation Deck

#### PELTŌ

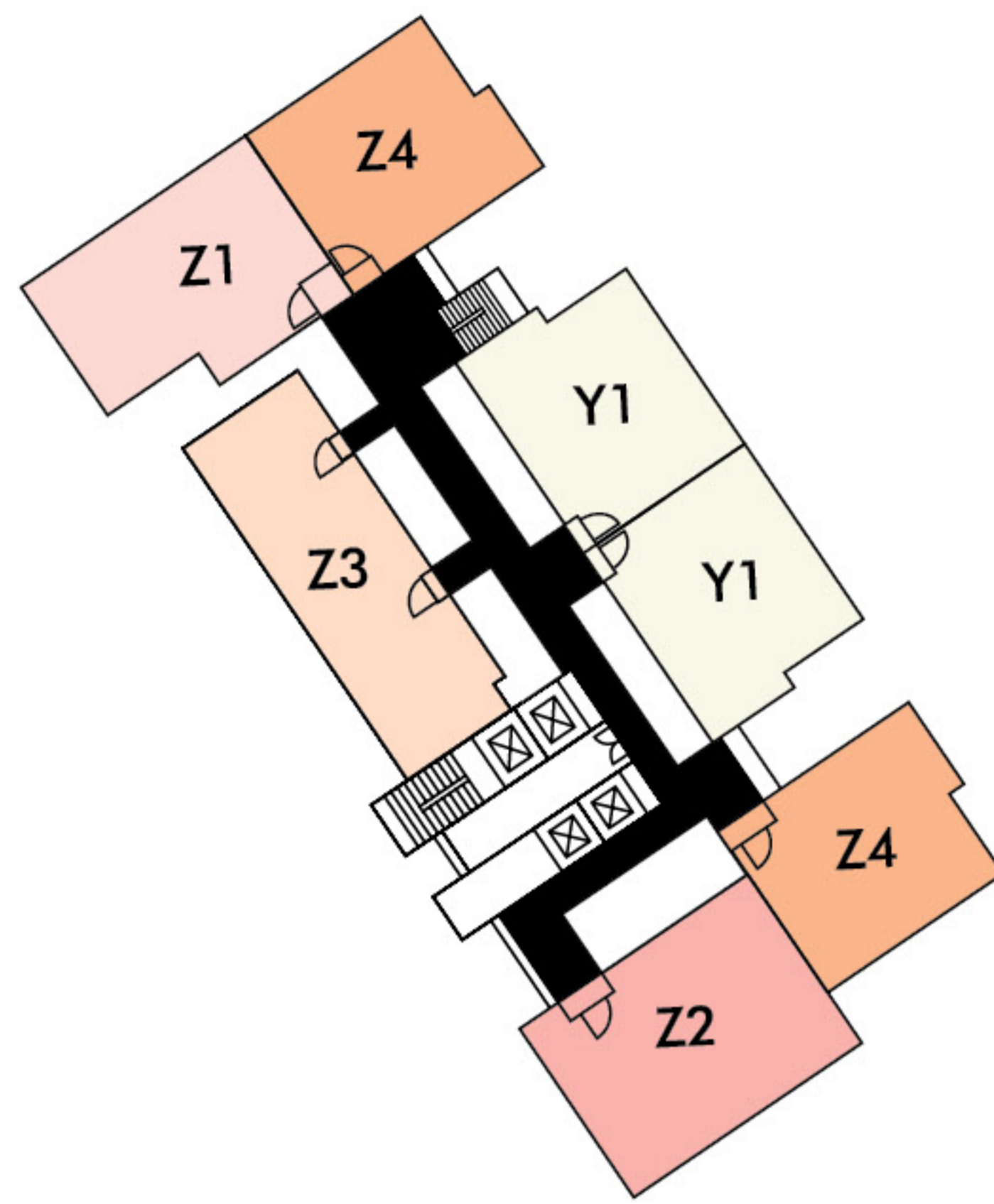


1. BBQ Area
2. Pavilion
3. Seating Alcoves
4. Reading Pod
5. Hammock Garden
6. Sunken Lounge
7. Maze Garden

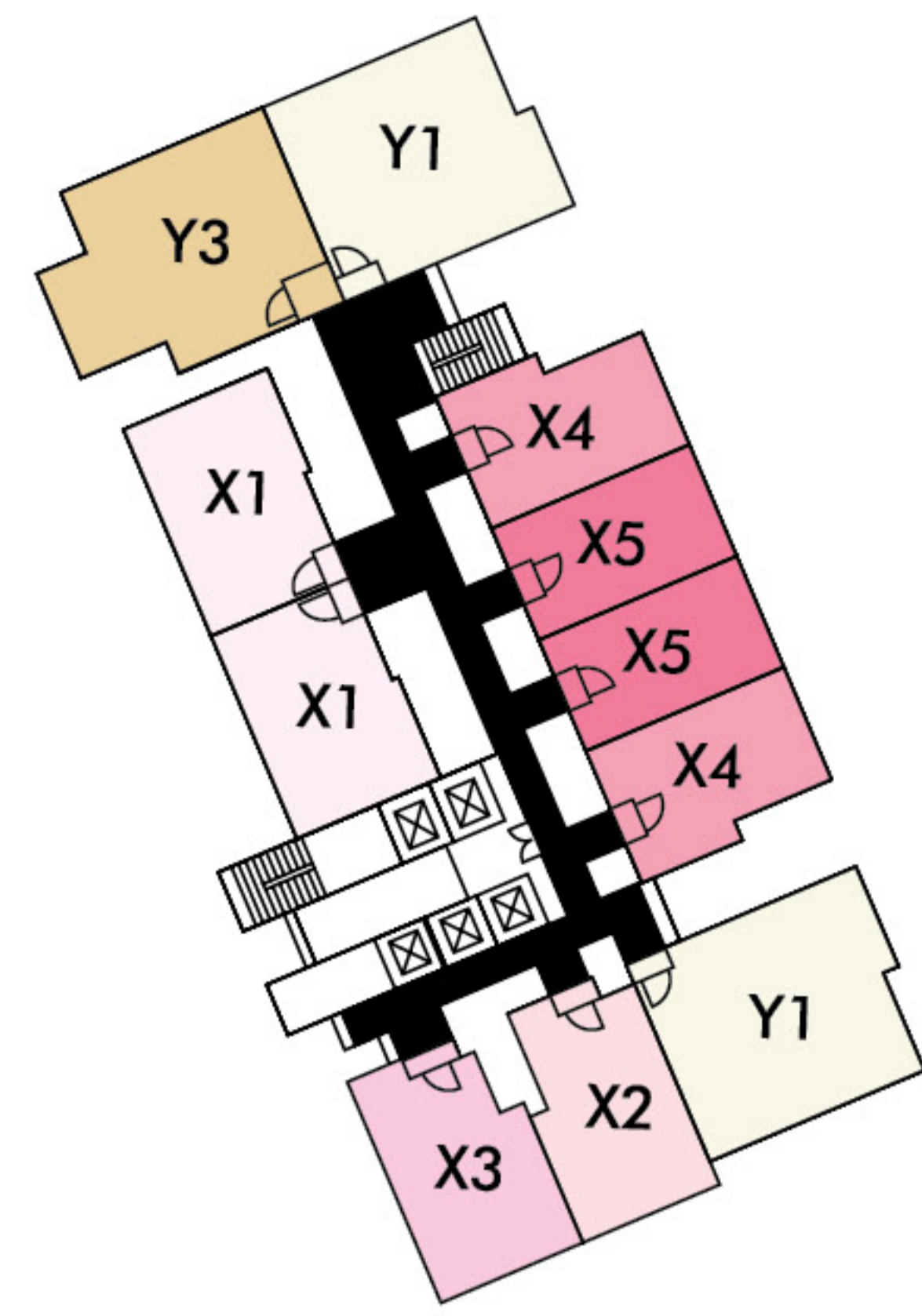
# Storey Plans



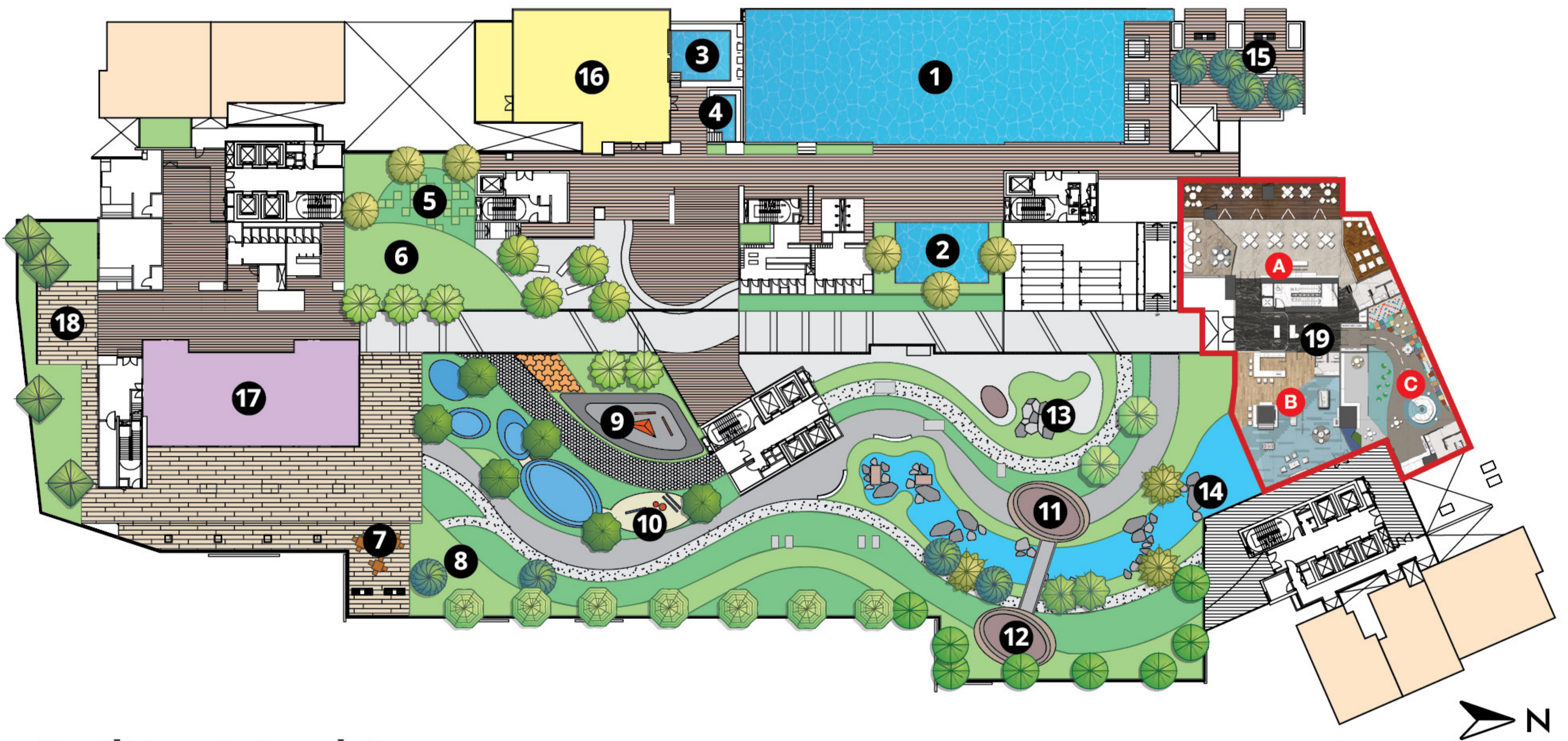
**CAVI**



**EBOÑ**



**PELTŌ**



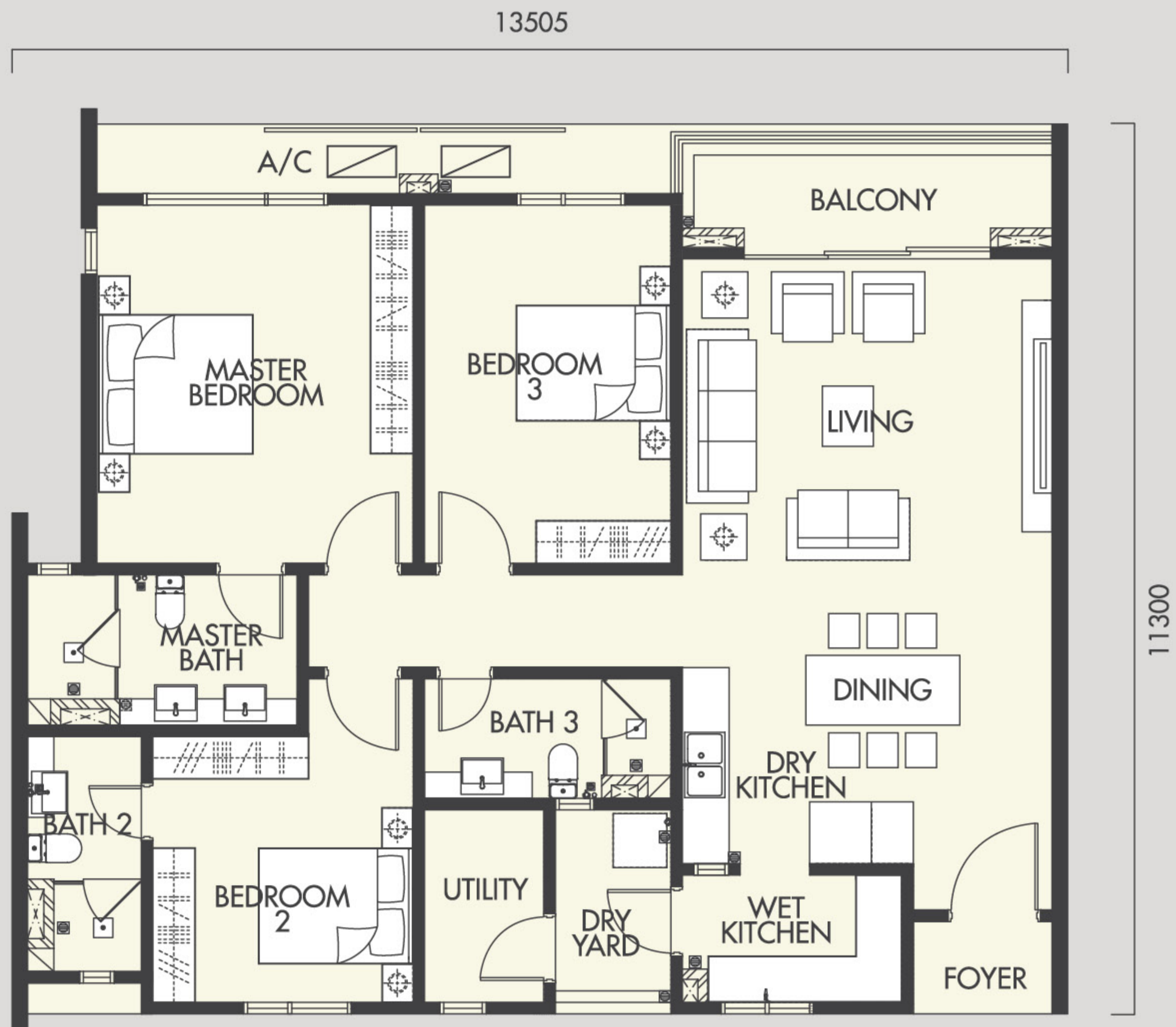
## Facilities @ Level 8

- |                         |                       |                                     |
|-------------------------|-----------------------|-------------------------------------|
| 1. Infinity Pool        | 7. BBQ Deck           | 13. Rock Climbing                   |
| 2. Wading Pool          | 8. Camping Site       | 14. Water Brooks                    |
| 3. Aqua Gym             | 9. Skate Park         | 15. Pavilion                        |
| 4. Jacuzzi              | 10. Callisthenic Play | 16. River View Gymnasium            |
| 5. Chess Garden         | 11. Breeze Tree House | 17. Function Room                   |
| 6. Garden               | 12. Water Tree House  | 18. Sunken Deck / Meditation Garden |
| 19. Private Club House  |                       |                                     |
| <b>A</b> Private Lounge | <b>B</b> Teens' Club  | <b>C</b> Kids' Edu Hub              |
| • Wine Lounge           | • Xbox                | • Play Workshop                     |
| • Cigar Lounge          | • Snooker Table       | • Montessori-like                   |
| • Alfresco              | • Foosball            | Learning Area                       |
| • English Tea Lounge    | • Café Area           |                                     |

# Floor Plans

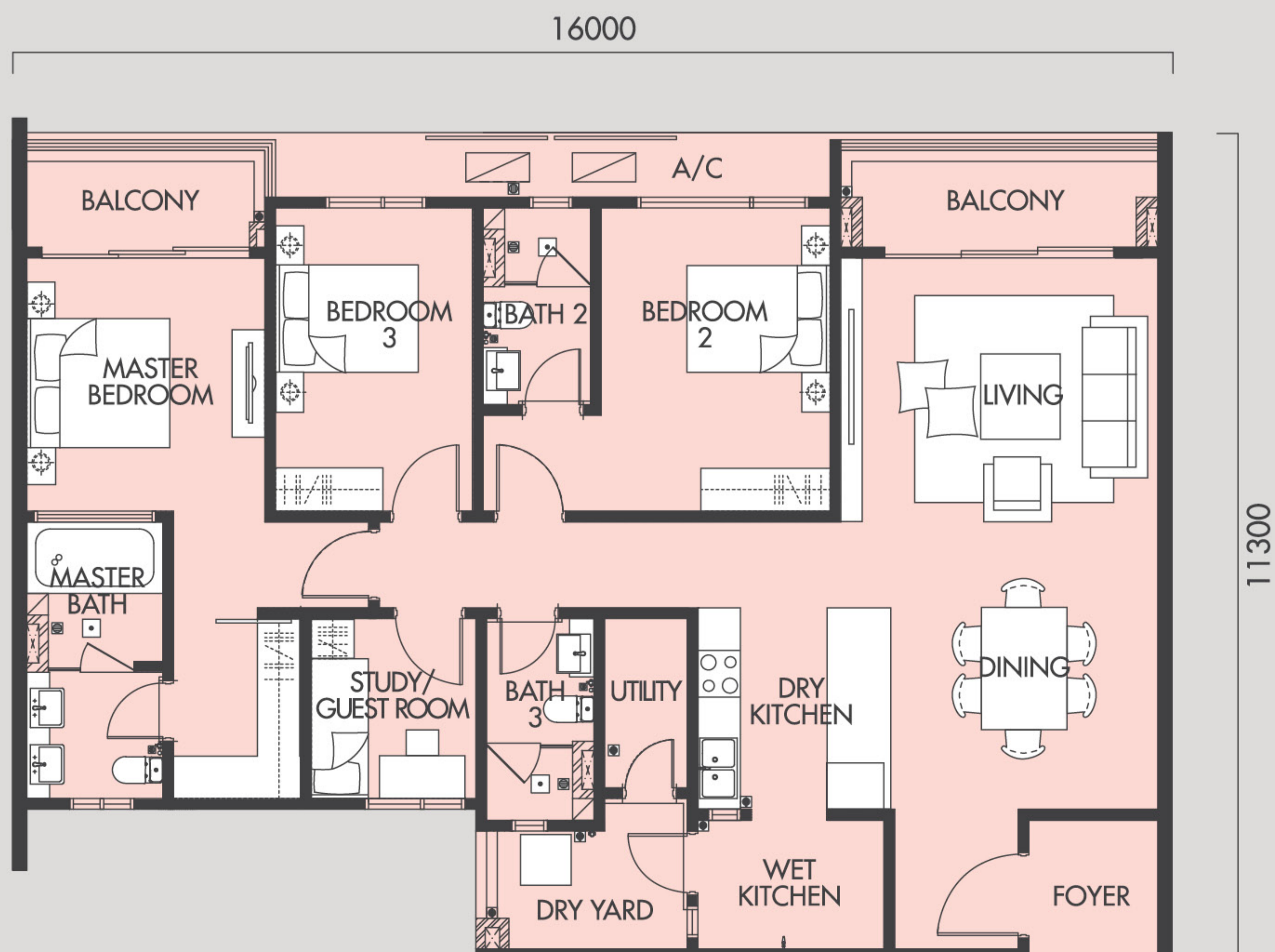
## TYPE Y1

Approx 1518 sf (141sm)  
3+1 Rooms + 3 Bathrooms



## TYPE Z1

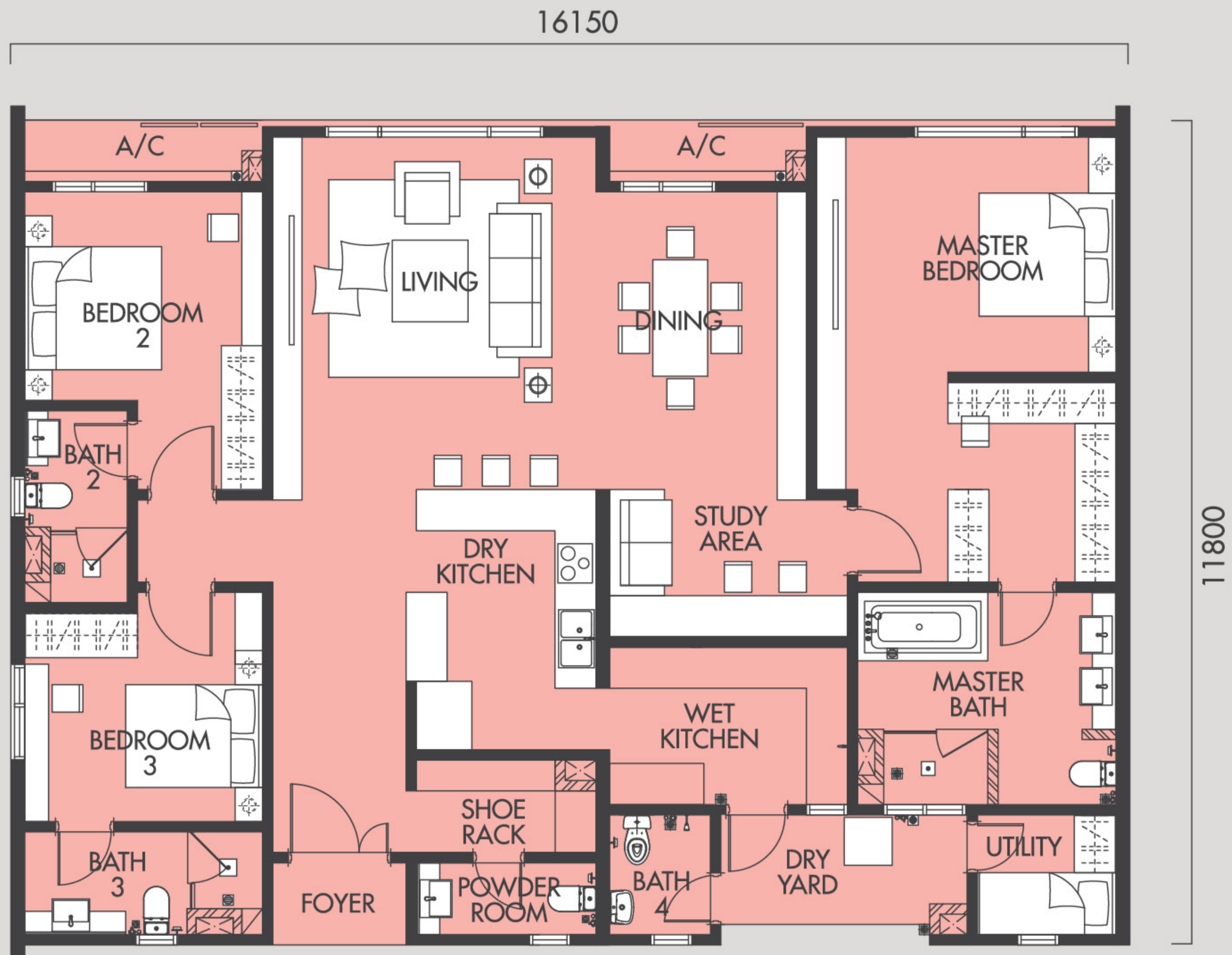
Approx 1733 sf (161sm)  
4+1 Rooms + 3 Bathrooms



# Floor Plans

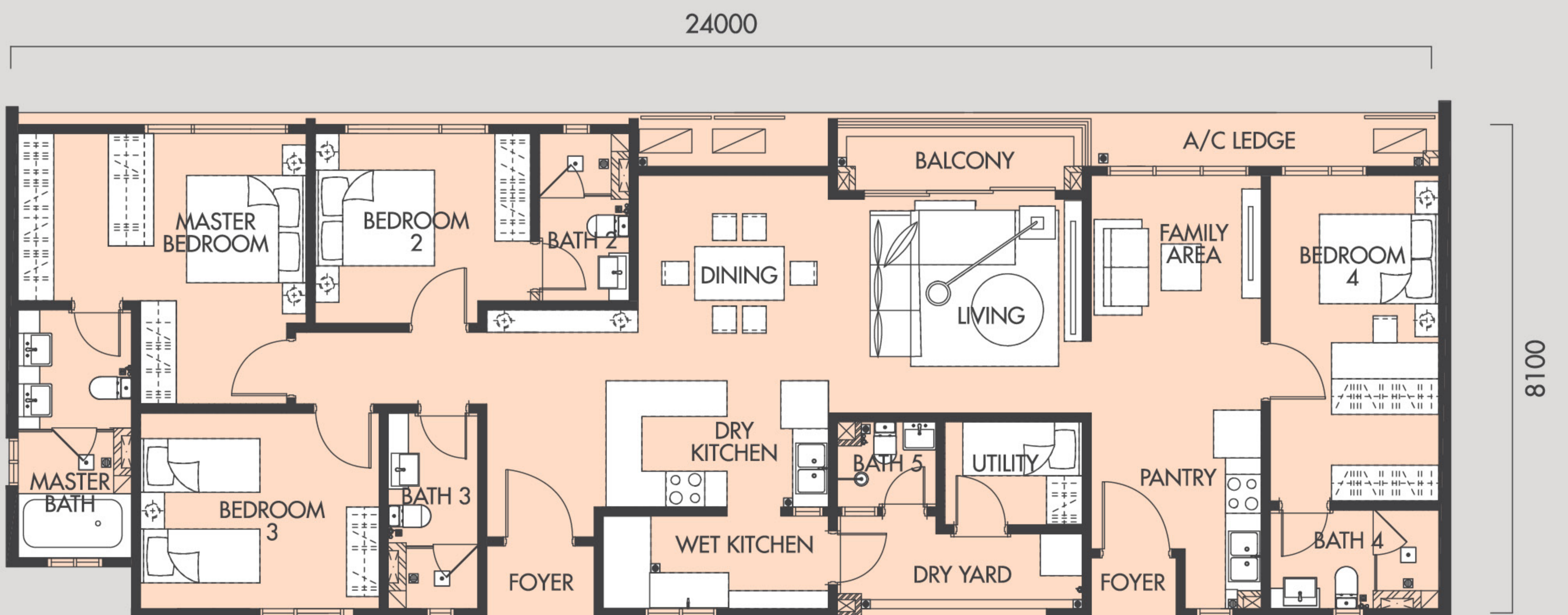
## TYPE Z2

Approx 1991 sf (185sm)  
3+1 Rooms + 4 Bathrooms



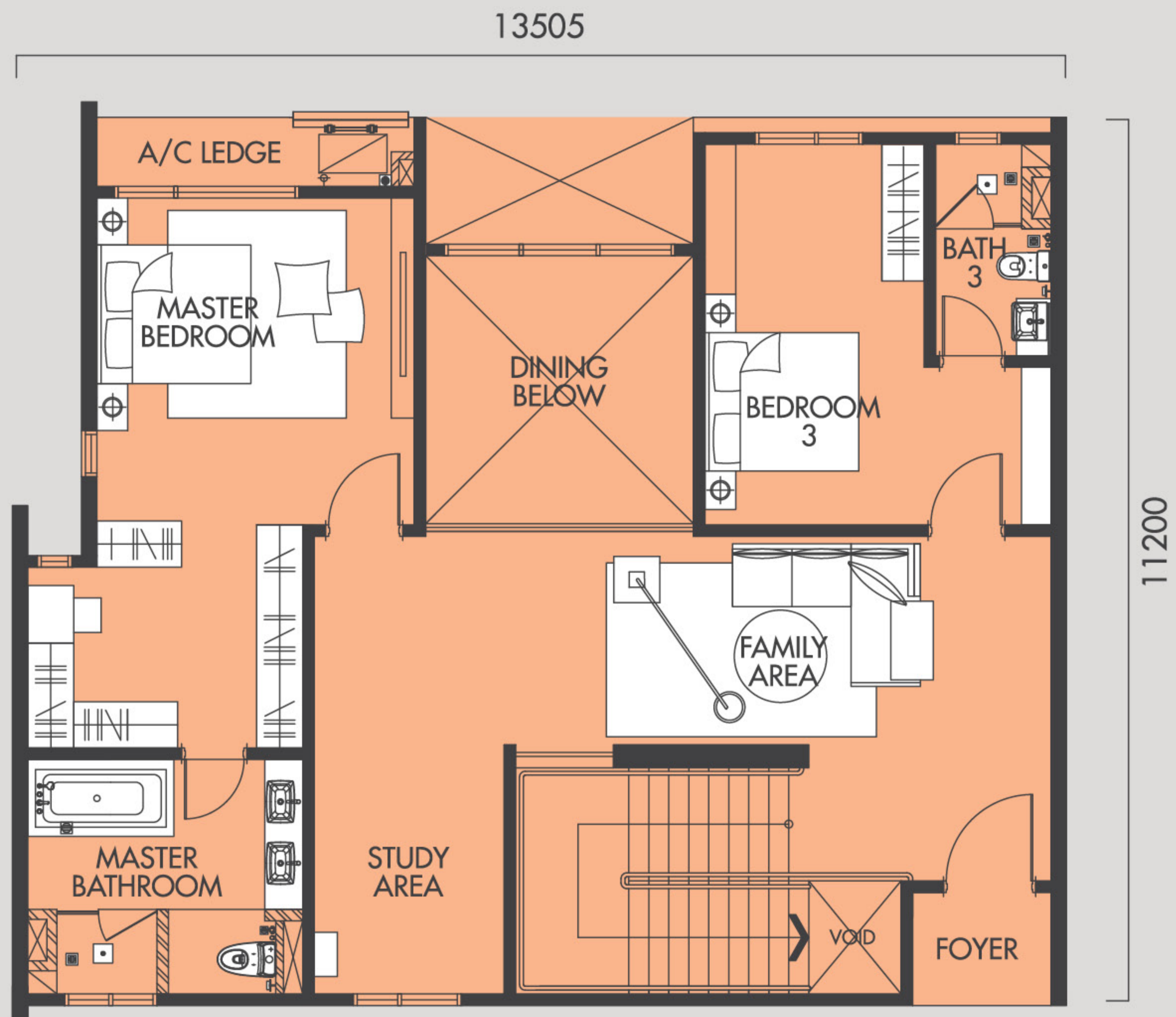
## TYPE Z3 (DUAL KEY)

Approx 2013 sf (187sm)  
4+1 Rooms + 5 Bathrooms

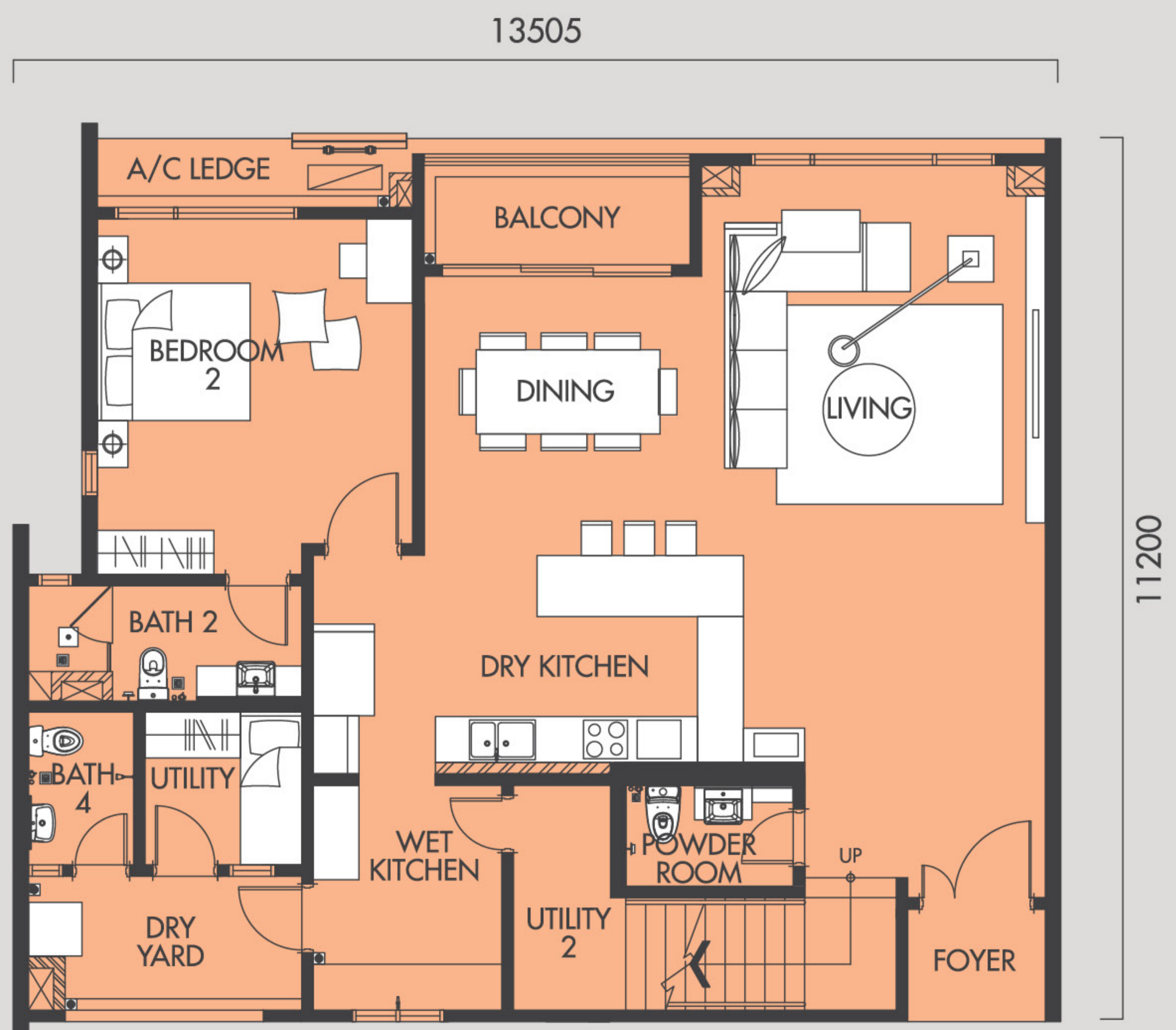


# Floor Plans

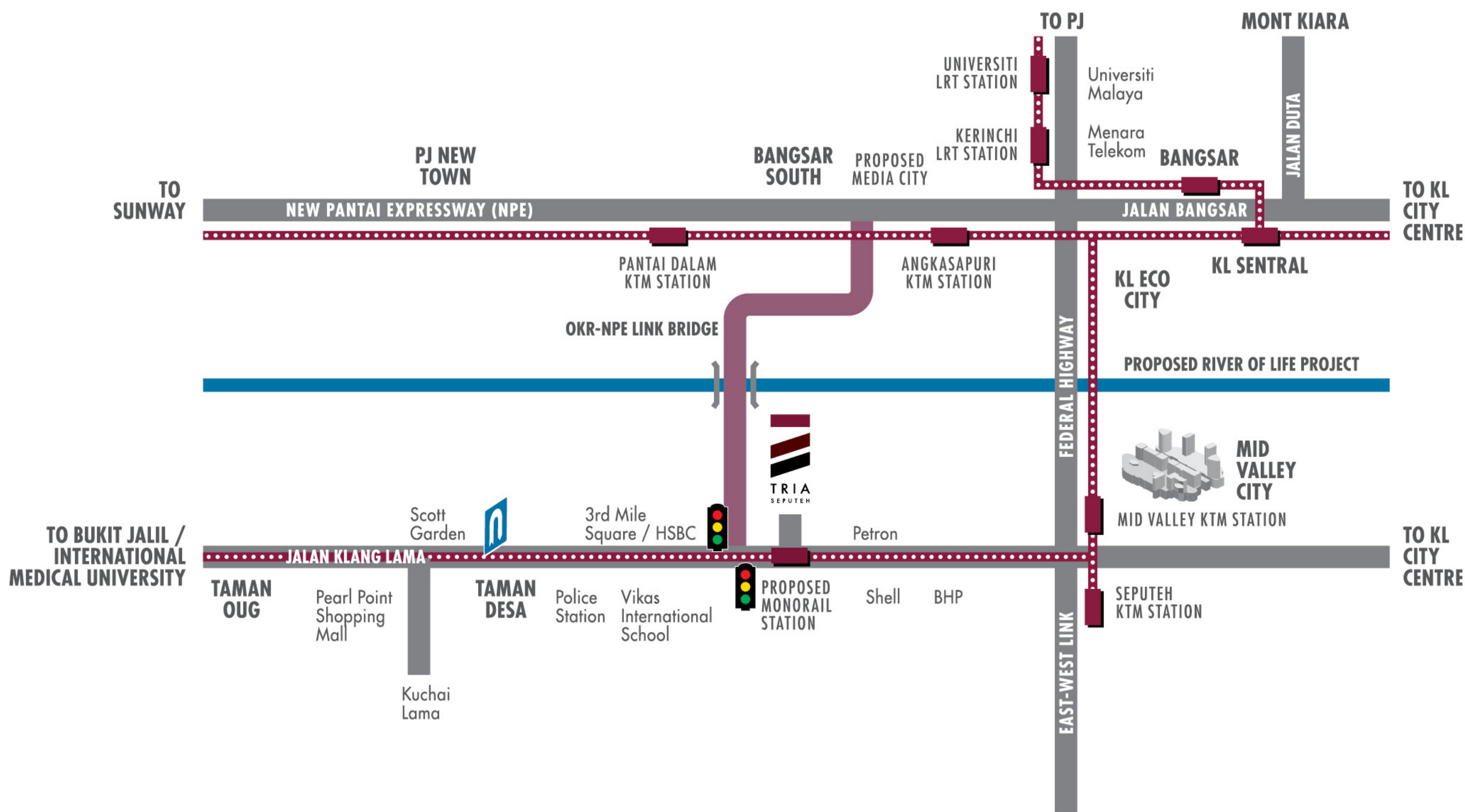
**TYPE Z4 (DUPLEX)** | Approx 2874 sf (267sm)  
4+1 Rooms + 4 Bathrooms



**UPPER**



**LOWER**



Envisioned by:



An exclusive phase of:



Developer:

**MRCB SEPUTEHLAND SDN BHD** (787242-M)  
 A-L1-07, Lvl Block Komersial Vivo 9 Seputeh, No. 29,  
 Jalan Teluk Datok, Off Jalan Klang Lama, 58000 Kuala Lumpur  
 F: +603 7972 2393

Contact:

**+603 7971 9983**  
[triaseputeh.com.my](http://triaseputeh.com.my)

Developer Licence No.: 12160-3/08-2020/02652(L) • Validity Date: 19th August 2019 - 18th August 2020 • Advertising Permit No.: 12160-3/08-2020/02652(P) • Validity Date: 19th August 2019 - 18th August 2020 • Land Tenure: Leasehold (99 Years) (Expiring 11 May 2113) • Approving Authority: Dewan Bandaraya Kuala Lumpur • Building Plan Approval No.: BP S1 OSC 2017 2612 • Restriction in Interest: The land shall not be transferred, leased or charged without prior approval by the State Authority • Land Encumbrances: Nil • Expected Date of Completion: November 2021 • Total No. of Units: 343 (Tower A-Condominium), 162 (Tower B-Condominium) • Balance Units: 256 • Type Y1 (113 units - 1,518 sq. ft.) • Type Y3 (30 units - 1,496 sq. ft.) • Type X1 (58 units - 1,001 sq. ft.) • Type X2 (35 units - 958 sq. ft.) • Type X3 (35 units - 1,001 sq. ft.) • Type X4 (60 units - 797 sq. ft.) • Type X5 (60 units - 764 sq. ft.) • Type Z1 (23 units - 1,733 sq. ft.) • Type Z2 (23 units - 1,991 sq. ft.) • Type Z3 (24 units - 2,013 sq. ft.) • Type Z4 (24 units - 2,874 sq. ft.) • Type RV1 (6 units - 1,938 sq. ft.) • Type RV2 (3 units - 2,228 sq. ft.) • Type RV3 (1 unit - 2,207 sq. ft.) • Type RV4 (2 units - 2,669 sq. ft.) • Type RV5 (1 unit - 3,348 sq. ft.) • Type RV6 (1 unit - 4,478 sq. ft.) • Type RV7 (1 unit - 4,381 sq. ft.) • Type RV8 (1 unit - 4,004 sq. ft.) • Type RV9 (1 unit - 4,241 sq. ft.) • Type SV4 (1 unit - 3,046 sq. ft.) • Type SV5 (1 unit - 4,306 sq. ft.) • Type SV6 (1 unit - 4,489 sq. ft.) • Selling Price: Tower A - RM642,800 (min) - RM1,823,800 (max) • Tower B - RM1,194,800 (min) - RM4,870,800 (max) • Developer Licence No.: 12160-4/10-2020/02966(L) • Validity Date: 12th October 2019 - 11th October 2020 • Advertising Permit No.: 12160-4/10-2020/02966(P) • Validity Date: 12th October 2019 - 11th October 2020 • Land Tenure: Leasehold (99 Years) (Expiring 11 May 2113) • Approving Authority: Dewan Bandaraya Kuala Lumpur • Building Plan Approval No.: BP S1 OSC 2017 2612 • Restriction in Interest: The land shall not be transferred, leased or charged without prior approval by the State Authority • Land Encumbrances: Nil • Expected Date of Completion: November 2021 • Total No. of Units: 229 (Tower C-Condominium) • Type Y1 (77 units - 1,518 sq. ft.) • Type Y2 (30 units - 1,647 sq. ft.) • Type X1 (48 units - 1,001 sq. ft.) • Type X4 (23 units - 797 sq. ft.) • Type X5 (23 units - 764 sq. ft.) • Type Z1 (24 units - 1,733 sq. ft.) • Type SV1 (1 unit - 3,154 sq. ft.) • Type SV2 (1 unit - 3,272 sq. ft.) • Type SV3 (1 unit - 1,981 sq. ft.) • Type SV4/A (1 unit - 3,025 sq. ft.) • Selling Price: RM650,560 (min) - RM3,433,040 (max) • Bumiputera Discount: 5%. THIS ADVERTISEMENT HAS BEEN APPROVED BY THE MINISTRY OF HOUSING MALAYSIA.