



**TRIA**  
SEPUTEH

**PELTO**  
TOWER

**CAVI**  
TOWER

[triaseputeh.com.my](http://triaseputeh.com.my)

# PELTO

## Your View Of Your City.

Young. Ambitious.  
And making your way to the big wide world.  
Life's current. Pushing and pulling.  
Some may go with the flow.  
You go where you will.  
Breaking mountains. And carving new canyons.  
Here. You fit right in.

# CAVI

## Reach For The Stars.

Everlasting.  
Your omnipresence is always felt.  
And where others see an age of twilight,  
you know that it is merely the beginning  
of a brand new day all over again.  
And in that vastness you dance among the stars.  
Here. You reign supreme.

PELTŌ

EBON

CAVI





## Experience the concept of space

- Built-ups from 764 sf to 1733 sf
- A choice of units with 2 - 4 bedrooms
- Balanced natural lighting and shaded glazing
- 3 acres of greenery
- Private clubhouse

## Your lifestyle, protected

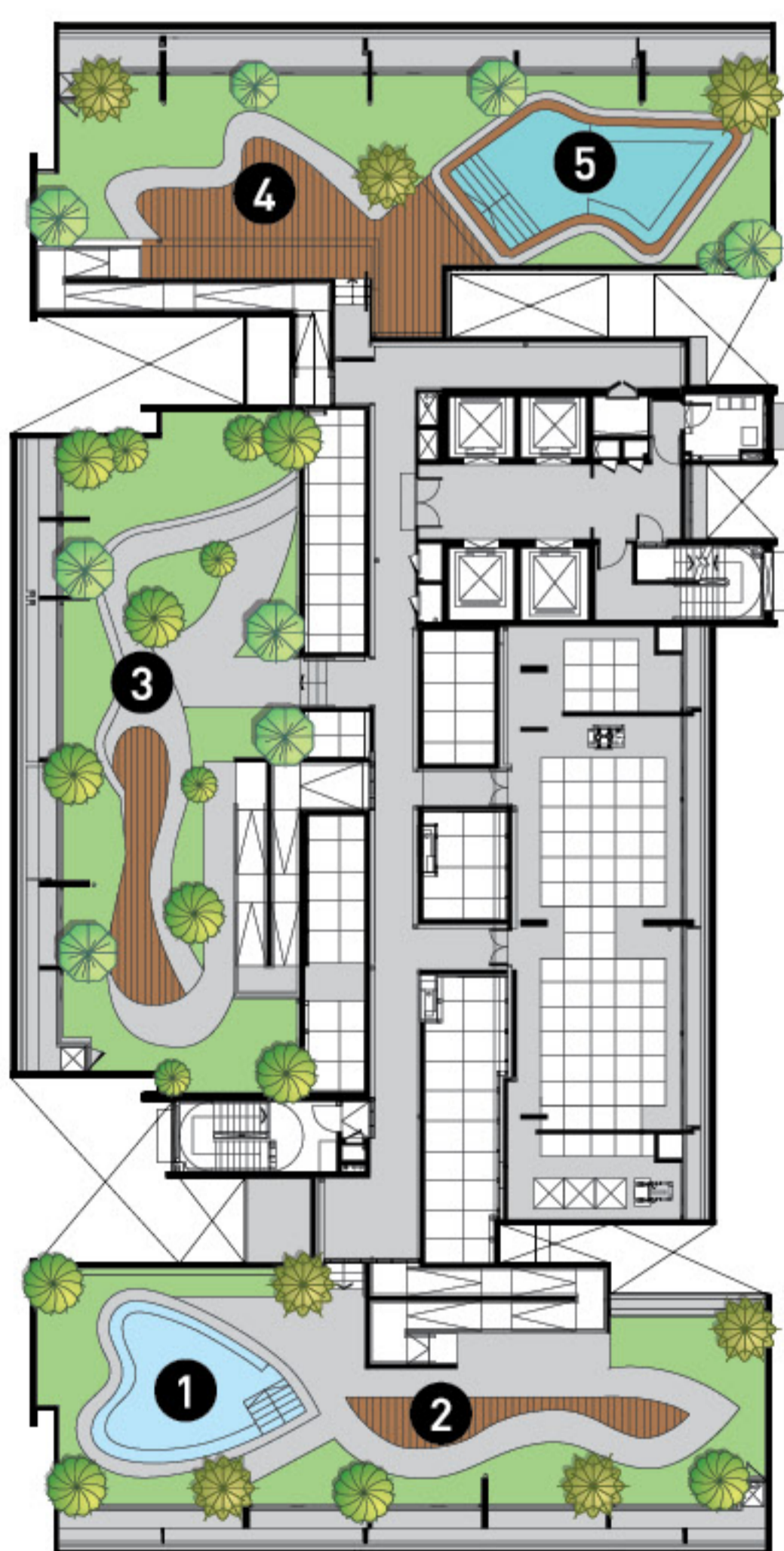
- 3-tier security
- Security perimeter fencing
- Double boom gate guardhouse with key card access
- CCTV monitoring



## Roof Garden Plans

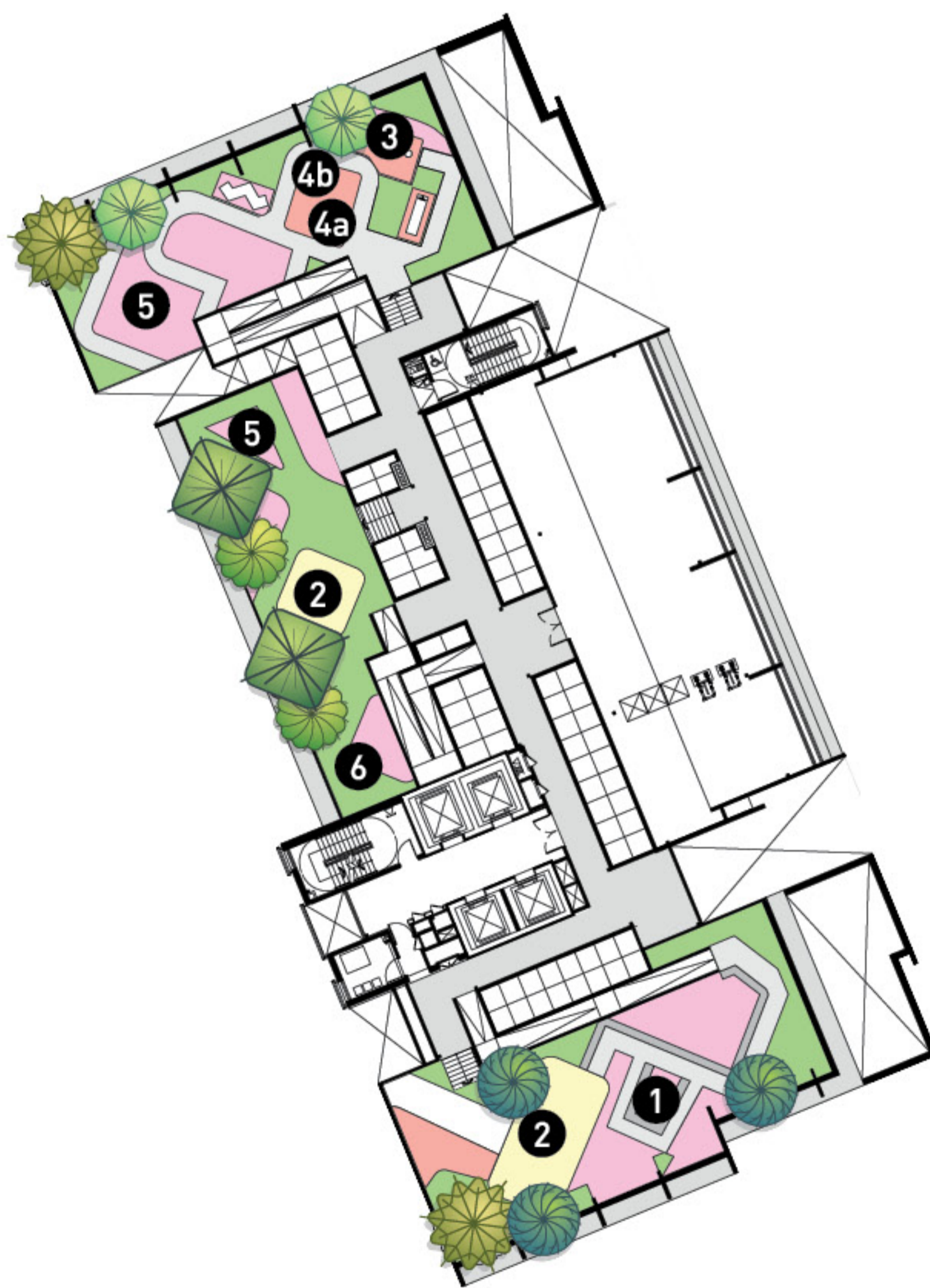


### CAVÍ



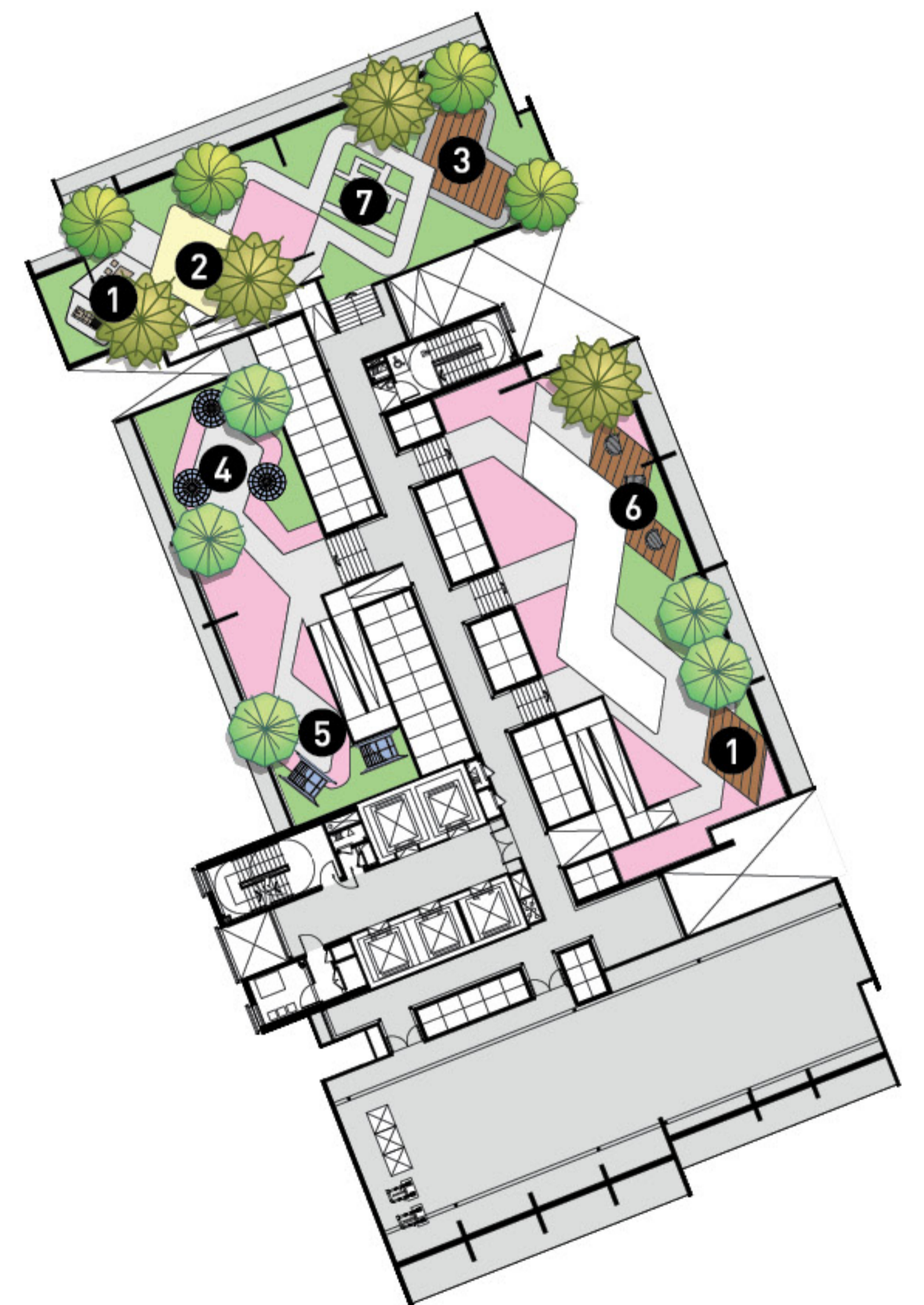
1. Jacuzzi
2. Fragrant Garden
3. Reflexology Path
4. Observation Deck
5. Spa Spot

### EBOÑ



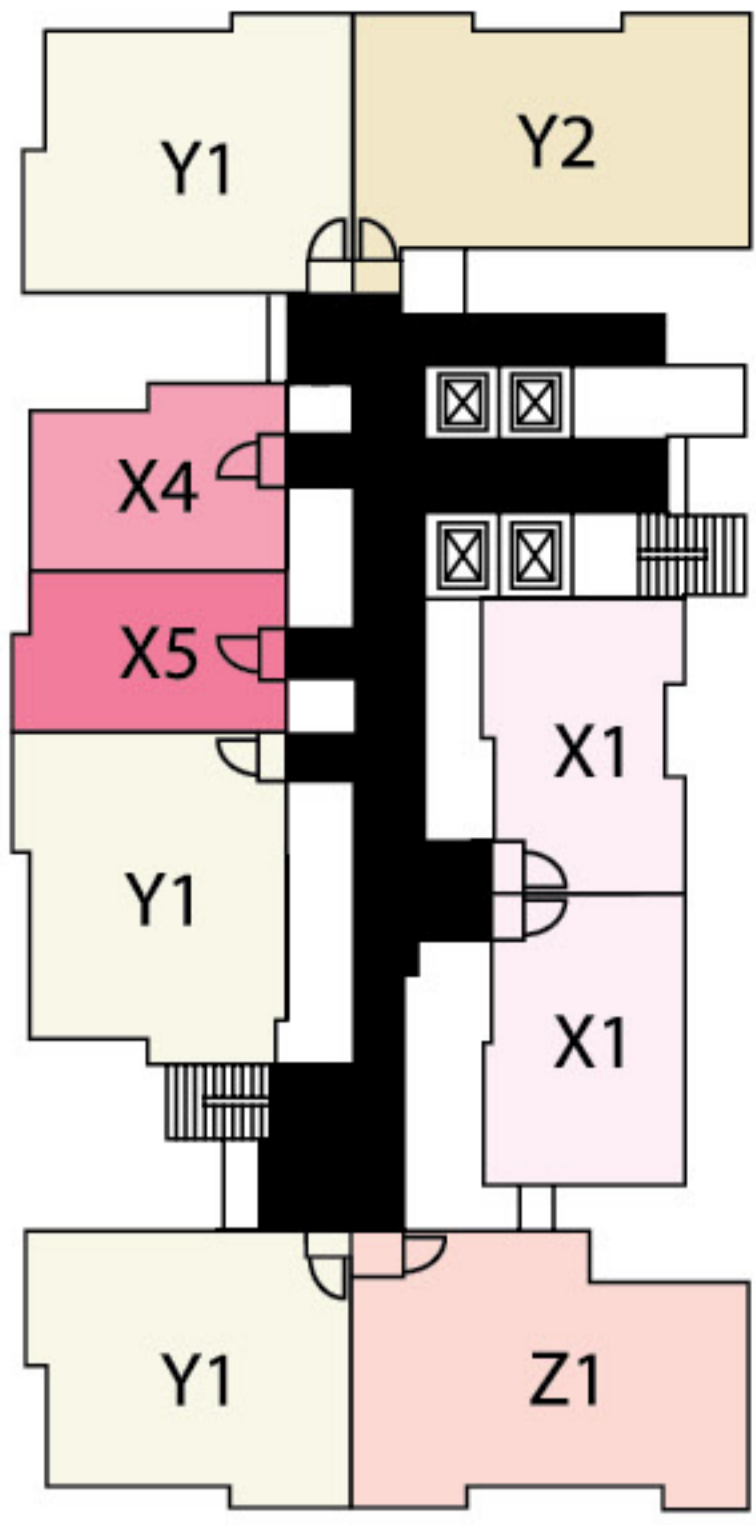
1. Herbs Garden
2. Light Pavillion
3. Parcourse Walk
- 4a. Yoga Lawn
- 4b. Meditation Lawn
5. Four Seasons Planting
6. Observation Deck

### PELTŌ

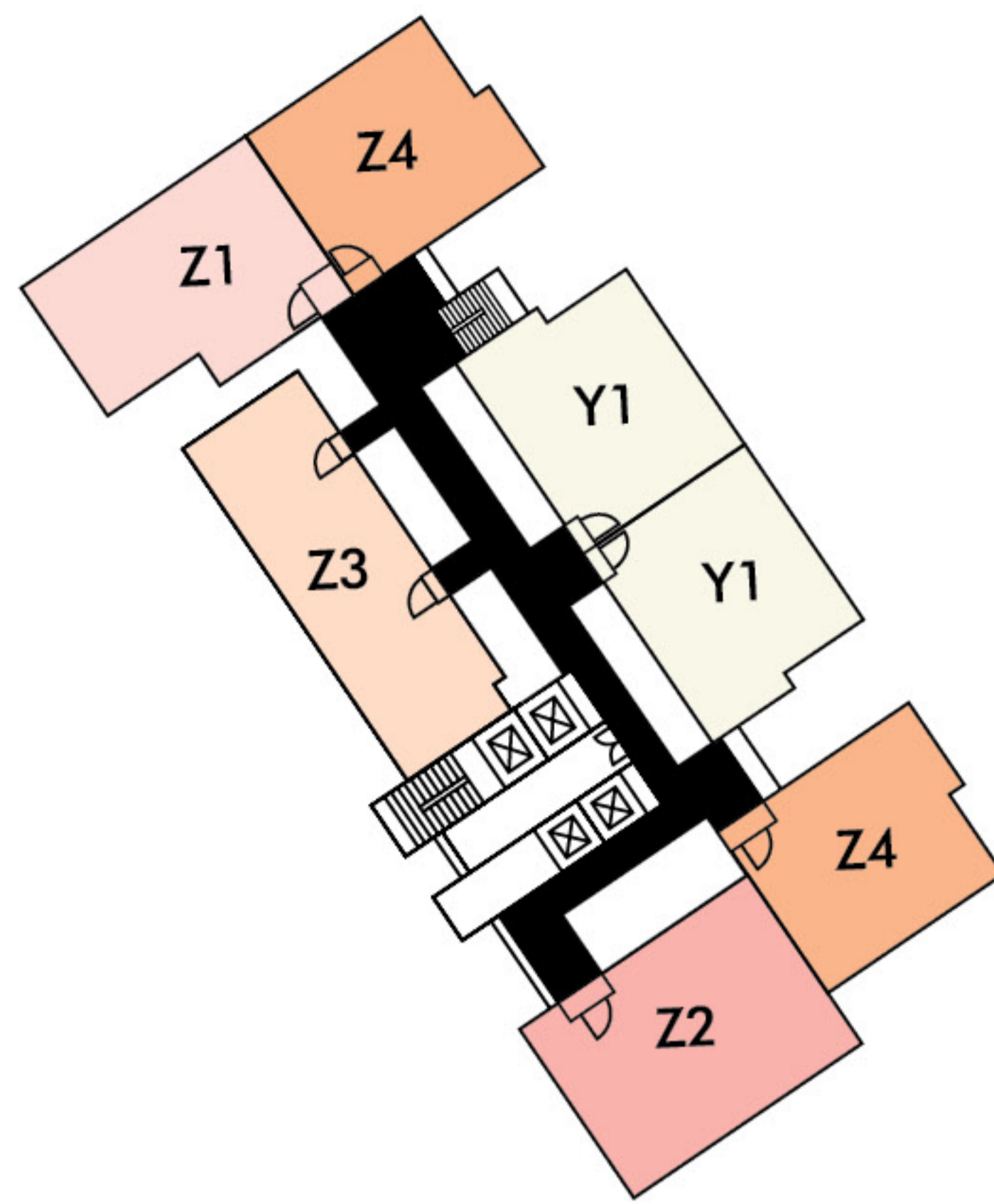


1. BBQ Area
2. Pavillion
3. Seating Alcoves
4. Reading Pod
5. Hammock Garden
6. Sunken Lounge
7. Maze Garden

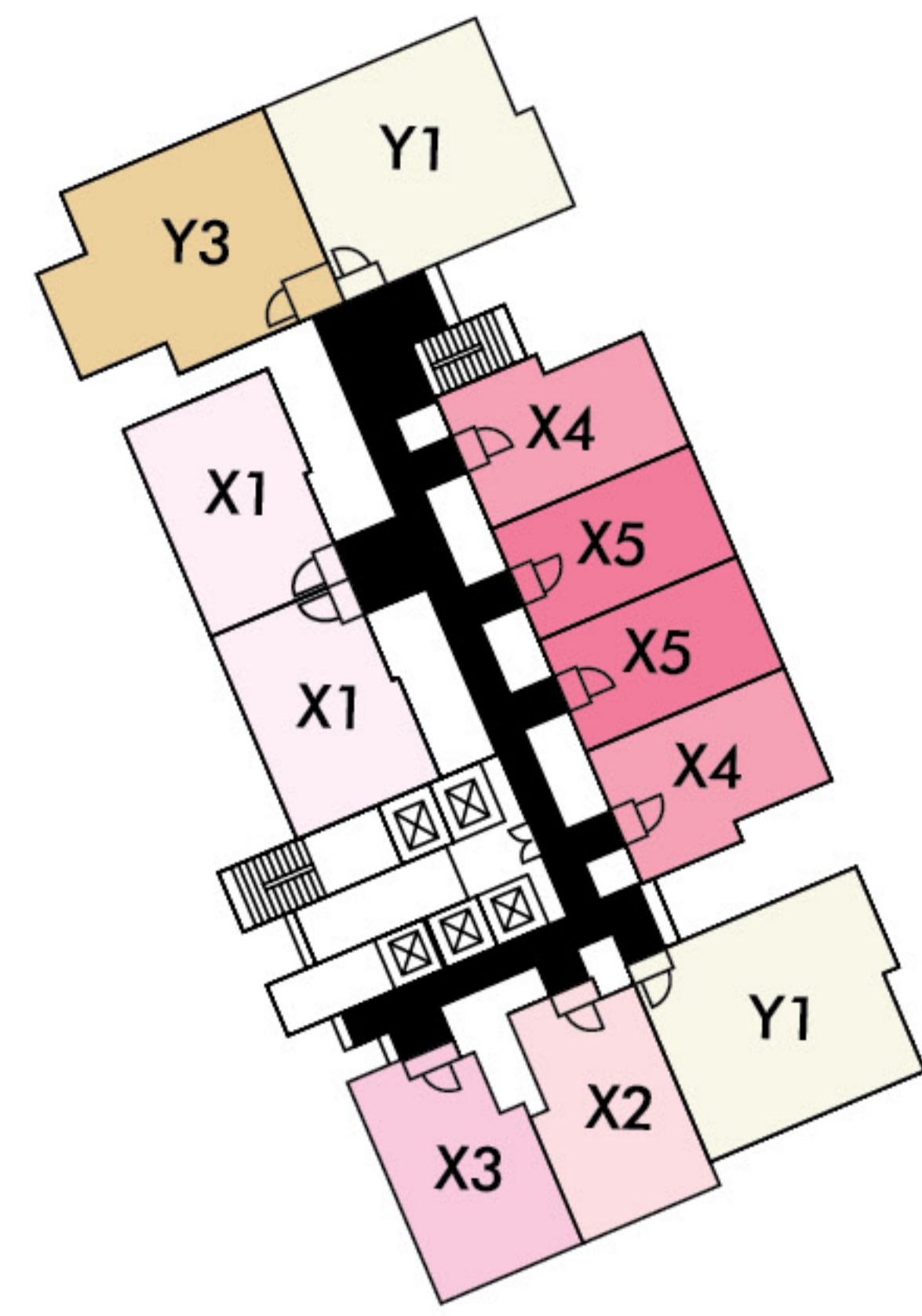
# Storey Plans



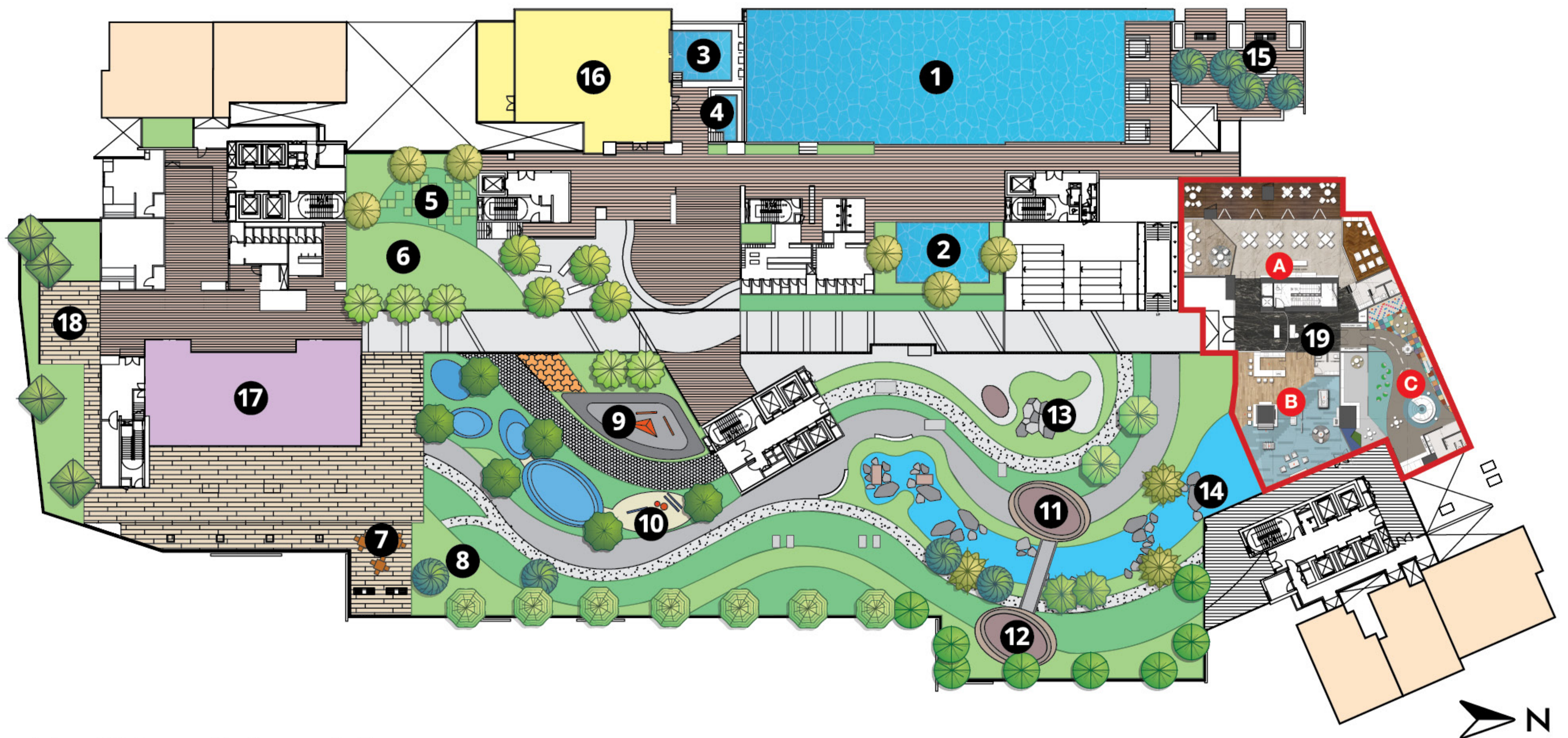
**CAVI**



**EBOÑ**



**PELTŌ**



## Facilities @ Level 8

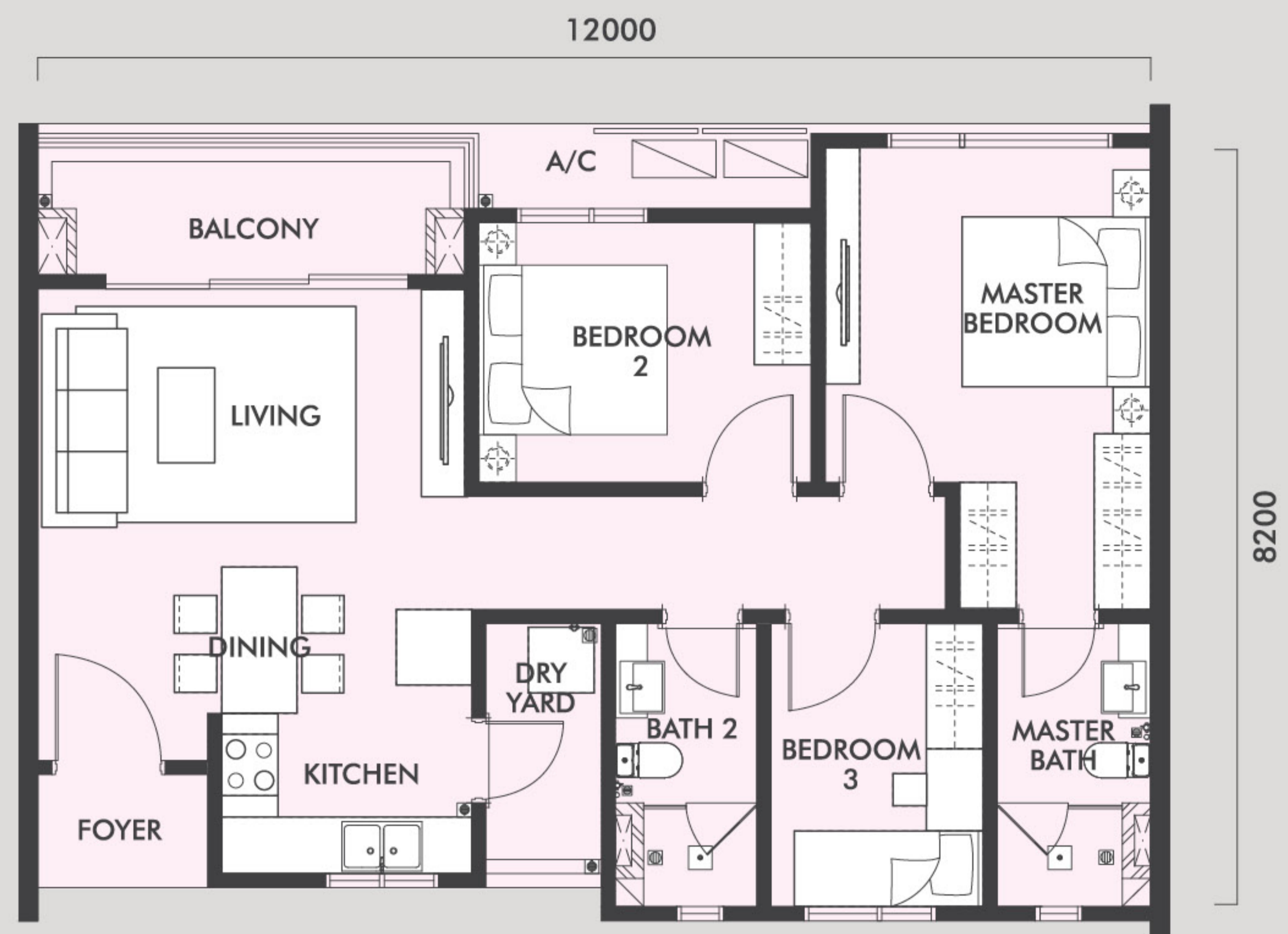
- |                         |                       |                                     |
|-------------------------|-----------------------|-------------------------------------|
| 1. Infinity Pool        | 7. BBQ Deck           | 13. Rock Climbing                   |
| 2. Wading Pool          | 8. Camping Site       | 14. Water Brooks                    |
| 3. Aqua Gym             | 9. Skate Park         | 15. Pavillion                       |
| 4. Jacuzzi              | 10. Callisthenic Play | 16. River View Gymnasium            |
| 5. Chess Garden         | 11. Breeze Tree House | 17. Function Room                   |
| 6. Garden               | 12. Water Tree House  | 18. Sunken Deck / Meditation Garden |
| 19. Private Club House  |                       |                                     |
| <b>A</b> Private Lounge | <b>B</b> Teens' Club  | <b>C</b> Kids' Edu Hub              |
| • Wine Lounge           | • Xbox                | • Play Workshop                     |
| • Cigar Lounge          | • Snooker Table       | • Montessori-like Learning Area     |
| • Alfresco              | • Foosball            |                                     |
| • English Tea Lounge    | • Café Area           |                                     |

# Floor Plans

## TYPE X1

Approx 1001 sf (93 sm)  
3 Bedrooms + 2 Bathrooms

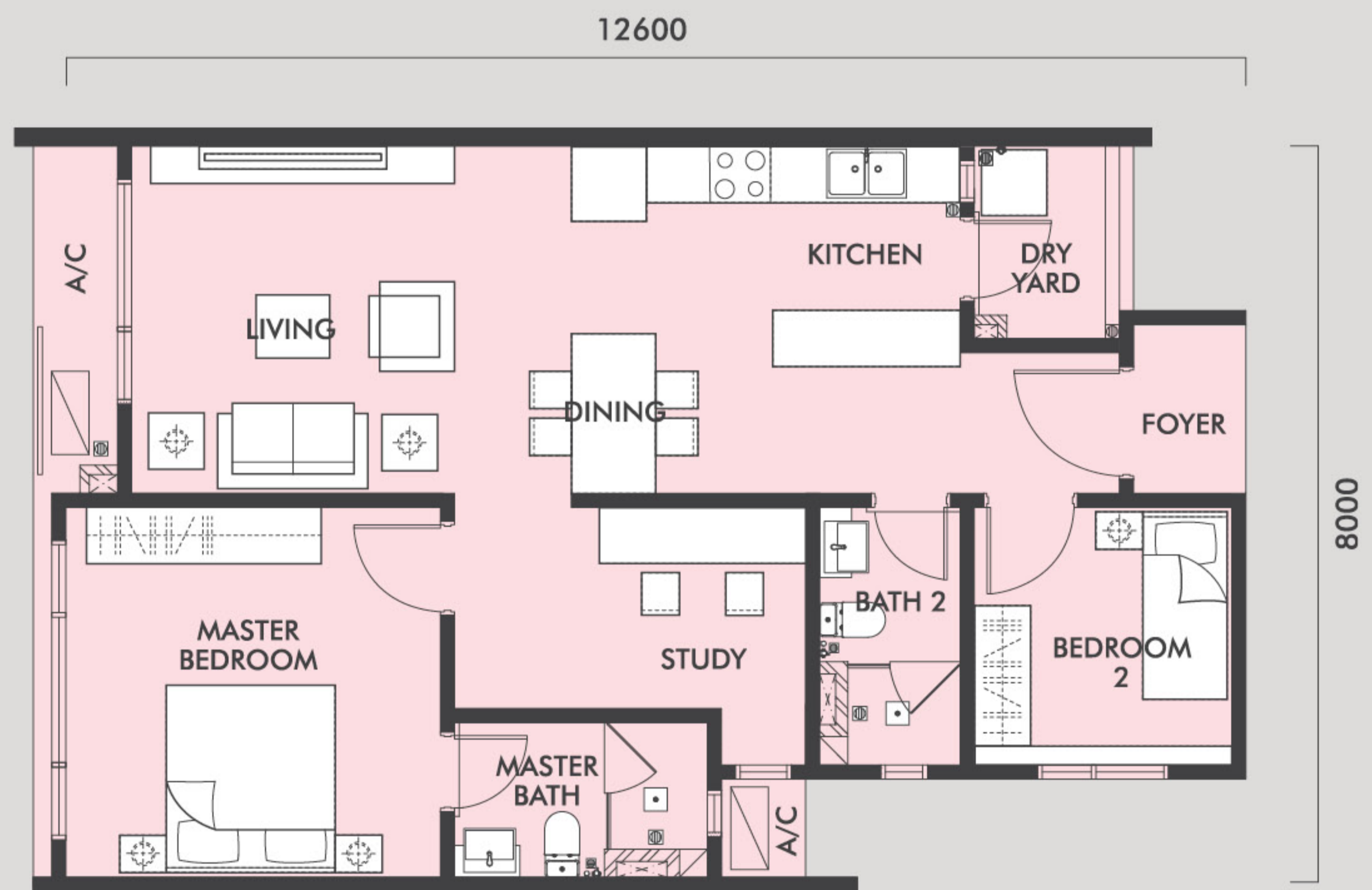
Pelto / Cavi



## TYPE X2

Approx 958 sf (89 sm)  
2+1 Bedrooms + 2 Bathrooms

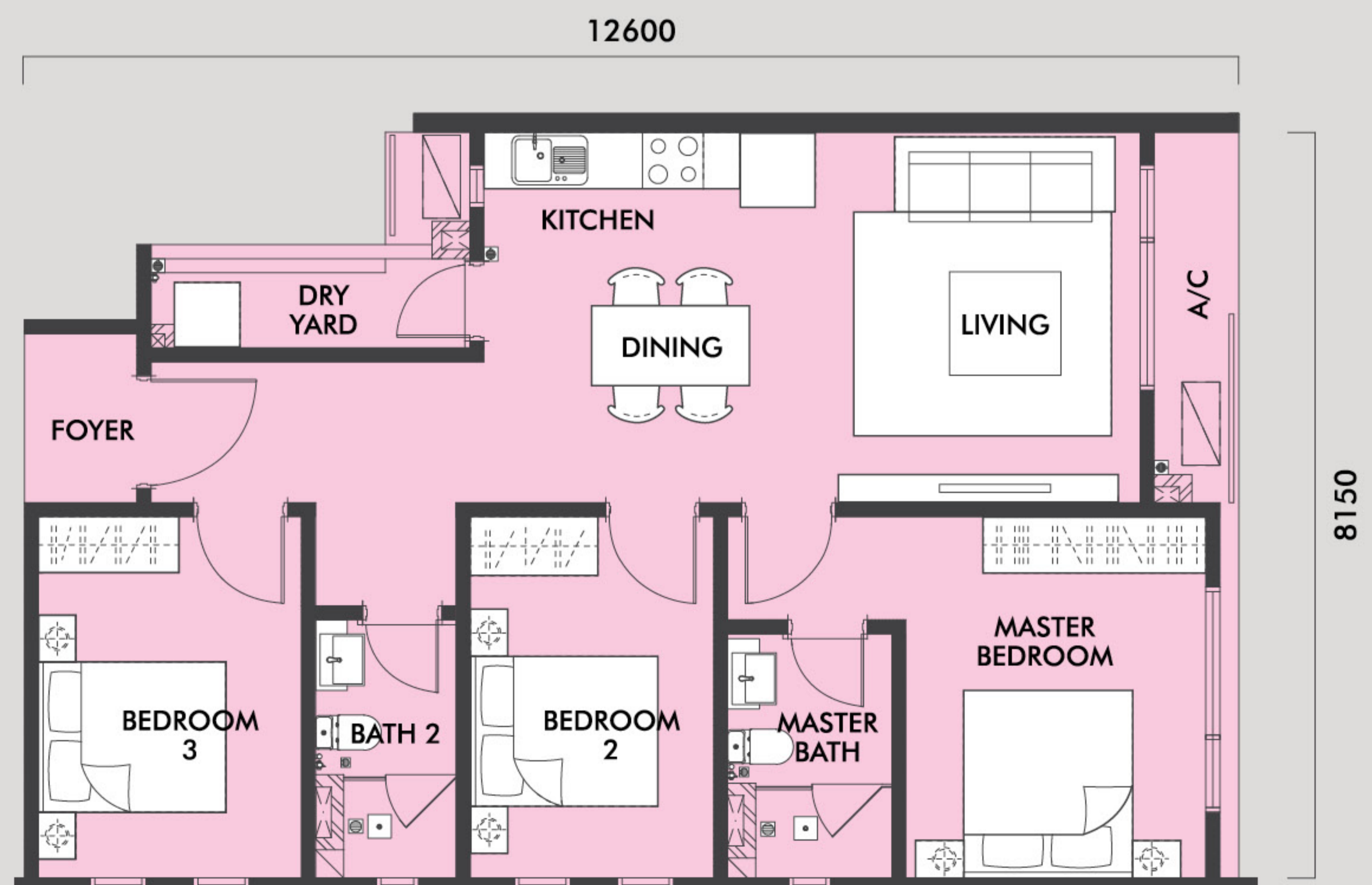
Pelto



## TYPE X3

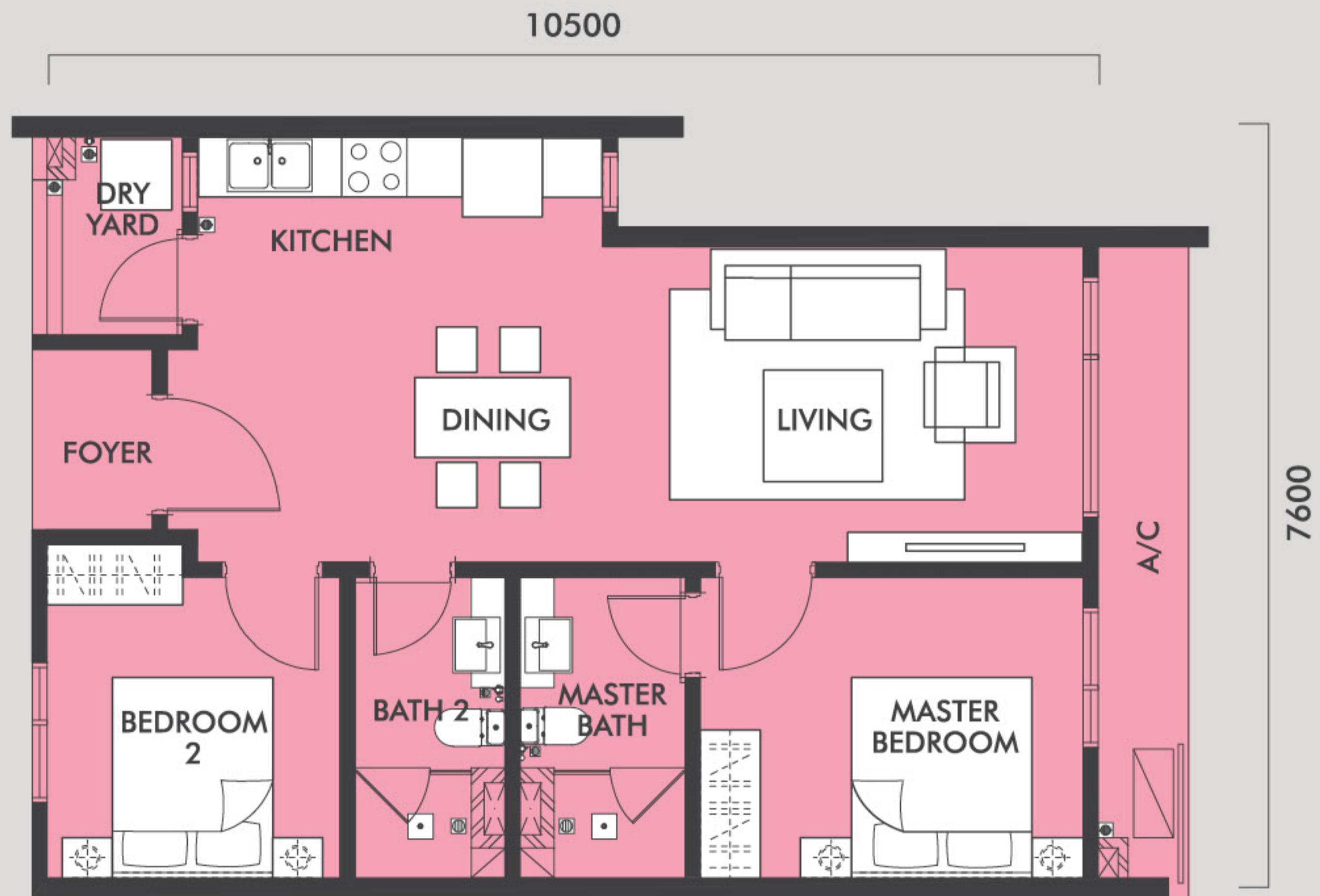
Approx 1001 sf (93 sm)  
3 Bedrooms + 2 Bathrooms

Pelto



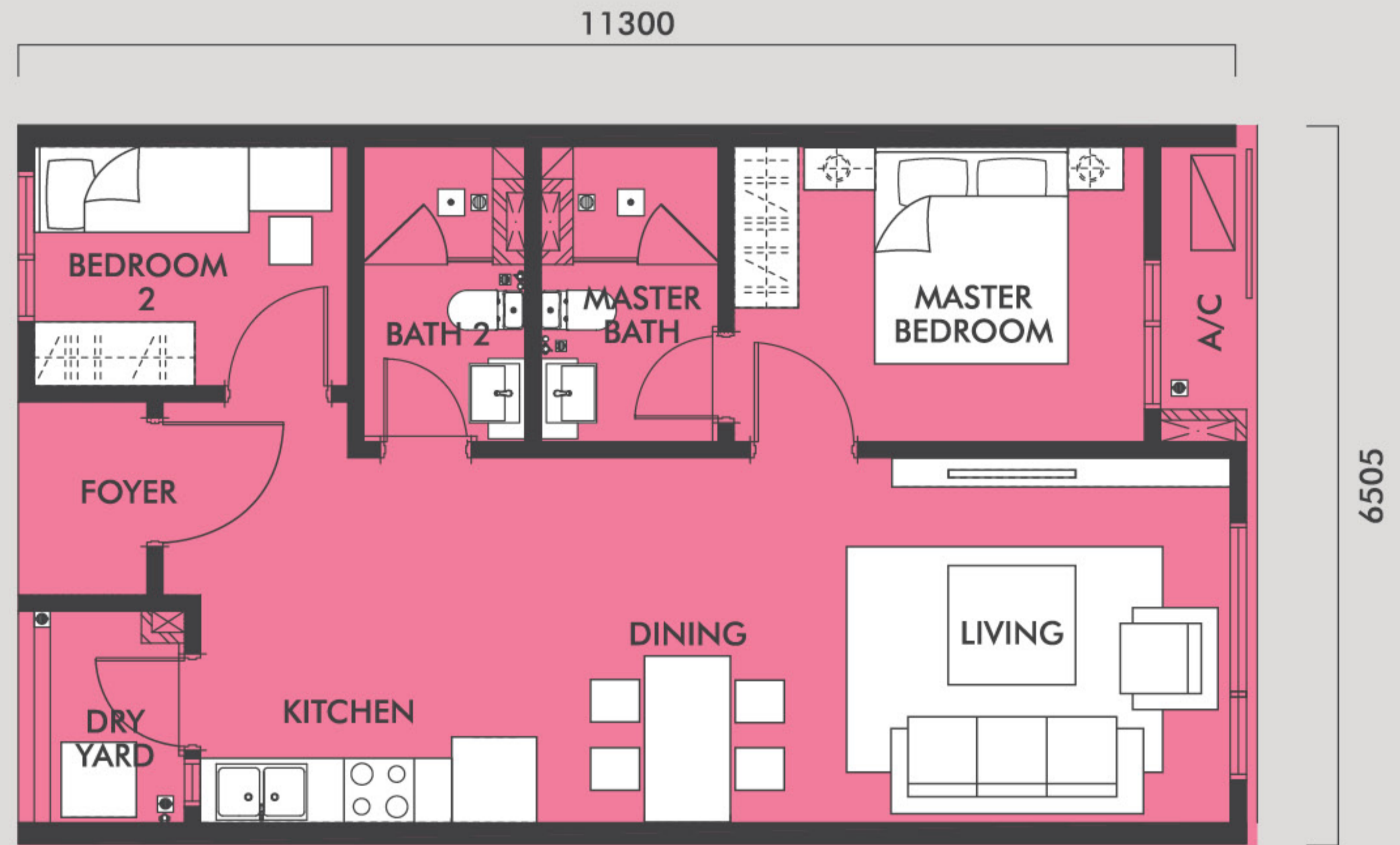
**TYPE X4**  
 Approx 797 sf (74 sm)  
 2 Bedrooms + 2 Bathrooms

Pelto / Cavi



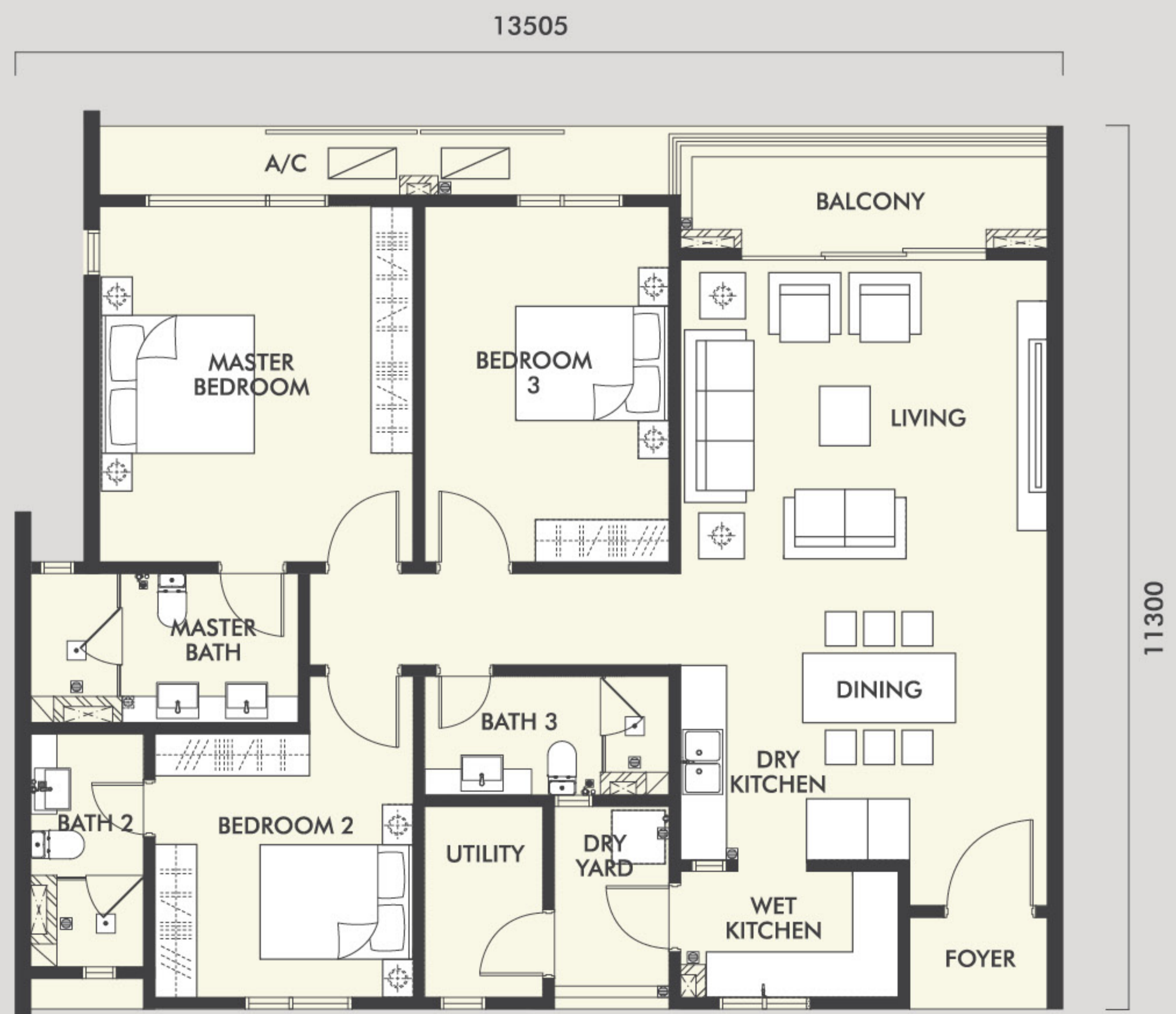
**TYPE X5**  
 Approx 764 sf (71 sm)  
 2 Bedrooms + 2 Bathrooms

Pelto / Cavi



**TYPE Y1**  
 Approx 1518 sf (141 sm)  
 3+1 Bedrooms + 3 Bathrooms

Pelto / Cavi



**TYPE Y3 (DUAL KEY)**

Approx 1496 sf (139 sm)  
3+1 Bedrooms + 3 Bathrooms

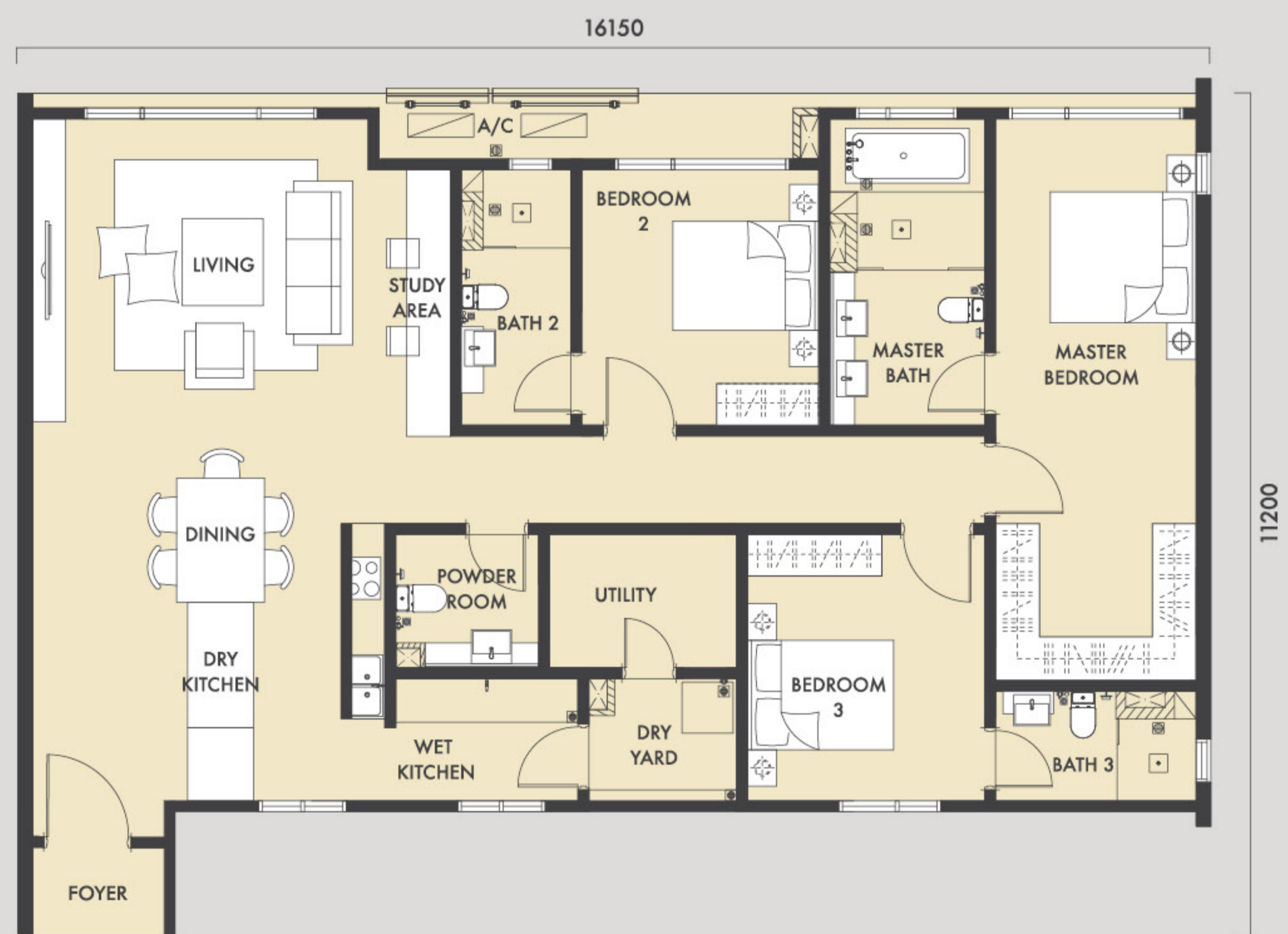
Pelto



**TYPE Y2**

Approx 1630 sf (151 sm)  
3+1 Bedrooms + 3 Bathrooms

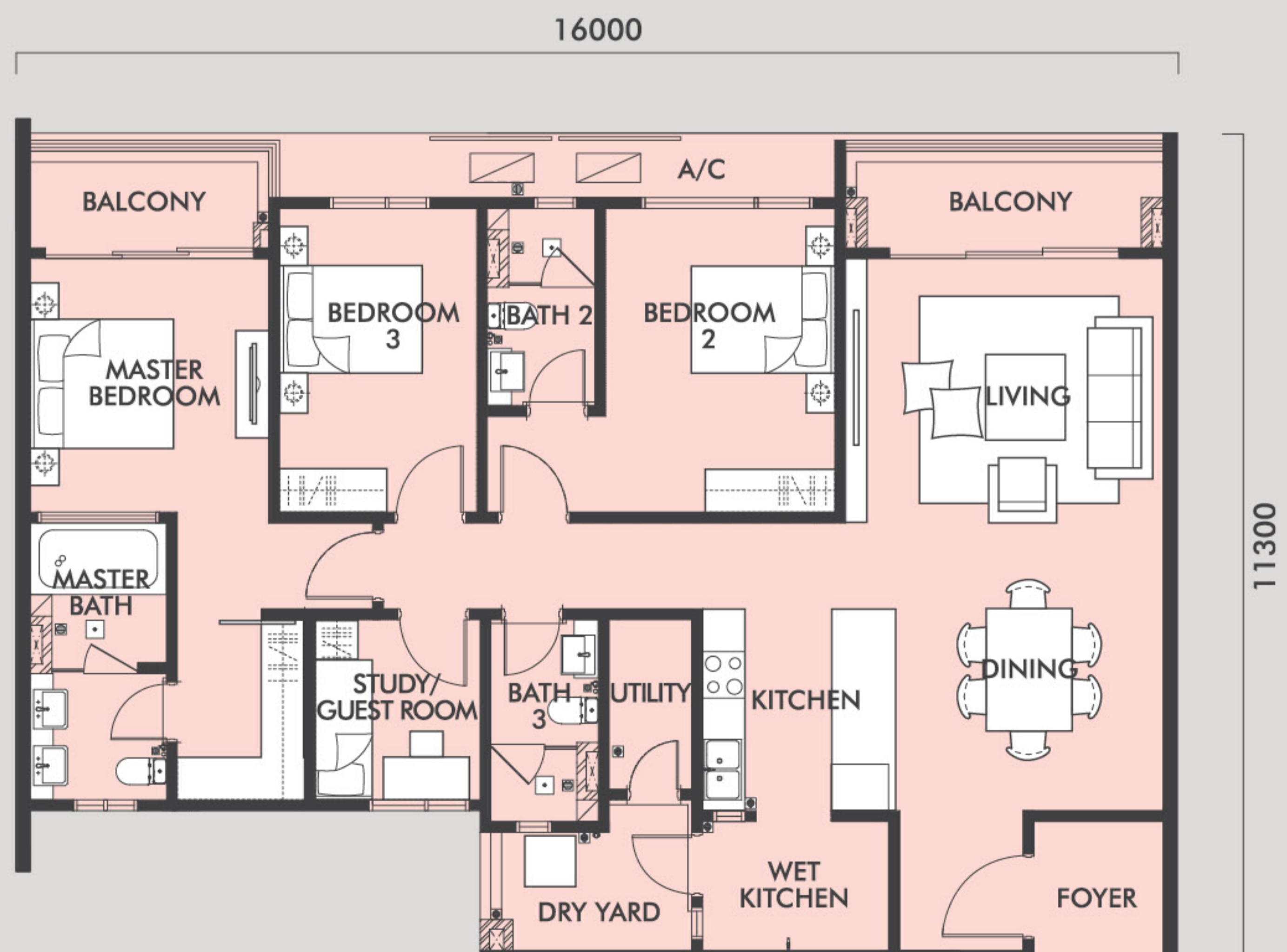
Cavi

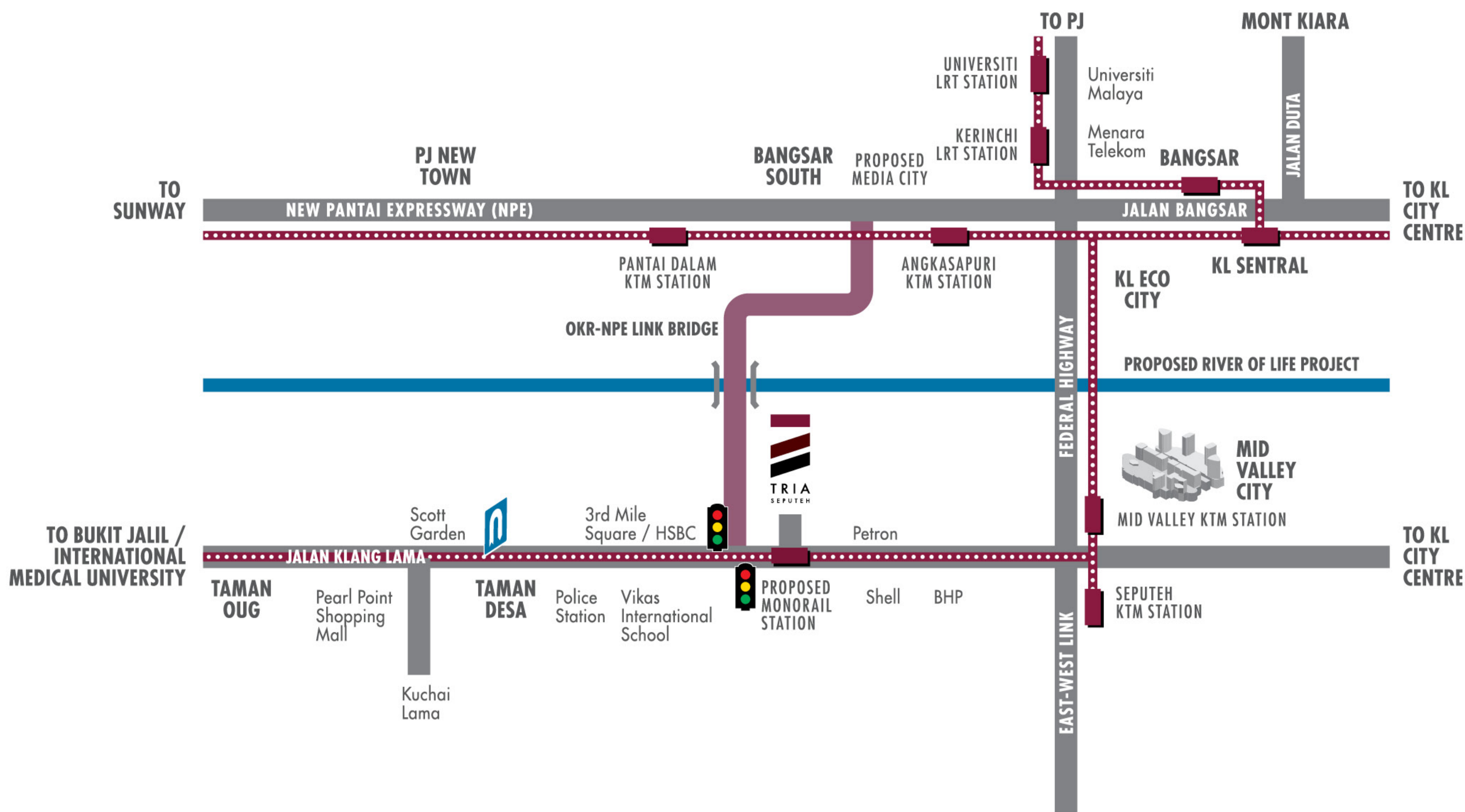


**TYPE Z1**

Approx 1733 sf (161 sm)  
4+1 Bedrooms + 3 Bathrooms

Cavi





Envisioned by:



An exclusive phase of:



Developer:

**MRCB SEPUTEHLAND SDN BHD** (787242-M)  
 A-L1-07, Lvl Block Komersial Vivo 9 Seputeh, No. 29,  
 Jalan Teluk Datok, Off Jalan Klang Lama, 58000 Kuala Lumpur  
 F: +603 7972 2393

Contact:

**+603 7971 9983**  
[triaseputeh.com.my](http://triaseputeh.com.my)

Developer Licence No.: 12160-3/08-2020/02652(L) • Validity Date: 19th August 2019 - 18th August 2020 • Advertising Permit No.: 12160-3/08-2020/02652(P) • Validity Date: 19th August 2019 - 18th August 2020 • Land Tenure: Leasehold (99 Years) (Expiring 11 May 2113) • Approving Authority: Dewan Bandaraya Kuala Lumpur • Building Plan Approval No.: BP S1 OSC 2017 2612 • Restriction in Interest: The land shall not be transferred, leased or charged without prior approval by the State Authority • Land Encumbrances: Nil • Expected Date of Completion: November 2021 • Total No. of Units: 343 (Tower A-Condominium), 162 (Tower B-Condominium) • Balance Units: 256 • Type Y1 (113 units - 1,518 sq. ft.) • Type Y3 (30 units - 1,496 sq. ft.) • Type X1 (58 units - 1,001 sq. ft.) • Type X2 (35 units - 958 sq. ft.) • Type X3 (35 units - 1,001 sq. ft.) • Type X4 (60 units - 797 sq. ft.) • Type X5 (60 units - 764 sq. ft.) • Type Z1 (23 units - 1,733 sq. ft.) • Type Z2 (23 units - 1,991 sq. ft.) • Type Z3 (24 units - 2,013 sq. ft.) • Type Z4 (24 units - 2,874 sq. ft.) • Type RV1 (6 units - 1,938 sq. ft.) • Type RV2 (3 units - 2,228 sq. ft.) • Type RV3 (1 unit - 2,207 sq. ft.) • Type RV4 (2 units - 2,669 sq. ft.) • Type RV5 (1 unit - 3,348 sq. ft.) • Type RV6 (1 unit - 4,478 sq. ft.) • Type RV7 (1 unit - 4,381 sq. ft.) • Type RV8 (1 unit - 4,004 sq. ft.) • Type RV9 (1 unit - 4,241 sq. ft.) • Type SV4 (1 unit - 3,046 sq. ft.) • Type SV5 (1 unit - 4,306 sq. ft.) • Type SV6 (1 unit - 4,489 sq. ft.) • Selling Price: Tower A - RM642,800 (min) - RM1,823,800 (max) • Tower B - RM1,194,800 (min) - RM4,870,800 (max) • Developer Licence No.: 12160-4/10-2020/02966(L) • Validity Date: 12th October 2019 - 11th October 2020 • Advertising Permit No.: 12160-4/10-2020/02966(P) • Validity Date: 12th October 2019 - 11th October 2020 • Land Tenure: Leasehold (99 Years) (Expiring 11 May 2113) • Approving Authority: Dewan Bandaraya Kuala Lumpur • Building Plan Approval No.: BP S1 OSC 2017 2612 • Restriction in Interest: The land shall not be transferred, leased or charged without prior approval by the State Authority • Land Encumbrances: Nil • Expected Date of Completion: November 2021 • Total No. of Units: 229 (Tower C-Condominium) • Type Y1 (77 units - 1,518 sq. ft.) • Type Y2 (30 units - 1,647 sq. ft.) • Type X1 (48 units - 1,001 sq. ft.) • Type X4 (23 units - 797 sq. ft.) • Type X5 (23 units - 764 sq. ft.) • Type Z1 (24 units - 1,733 sq. ft.) • Type SV1 (1 unit - 3,154 sq. ft.) • Type SV2 (1 unit - 3,272 sq. ft.) • Type SV3 (1 unit - 1,981 sq. ft.) • Type SV4/A (1 unit - 3,025 sq. ft.) • Selling Price: RM650,560 (min) - RM3,433,040 (max) • Bumiputera Discount: 5%. THIS ADVERTISEMENT HAS BEEN APPROVED BY THE MINISTRY OF HOUSING MALAYSIA.